



COMMUNITY DEVELOPMENT AS A PARTNER FOR HEALTH EQUITY

870 MARKET STREET, SUITE 1255 | SAN FRANCISCO, CA 94102 | 415.590.3034



Build Healthy
Places Network

PRESENTATION OUTLINE

1. Health Happens in Neighborhoods
2. What is Community Development?
3. Community Development's Scope and Scale
4. Momentum for Cross-Sector Collaboration
5. Opportunities for Public Health
6. The Network as the Connector



**HEALTH HAPPENS
IN NEIGHBORHOODS**

**IN DETERMINING
YOUR HEALTH...**

94102 >



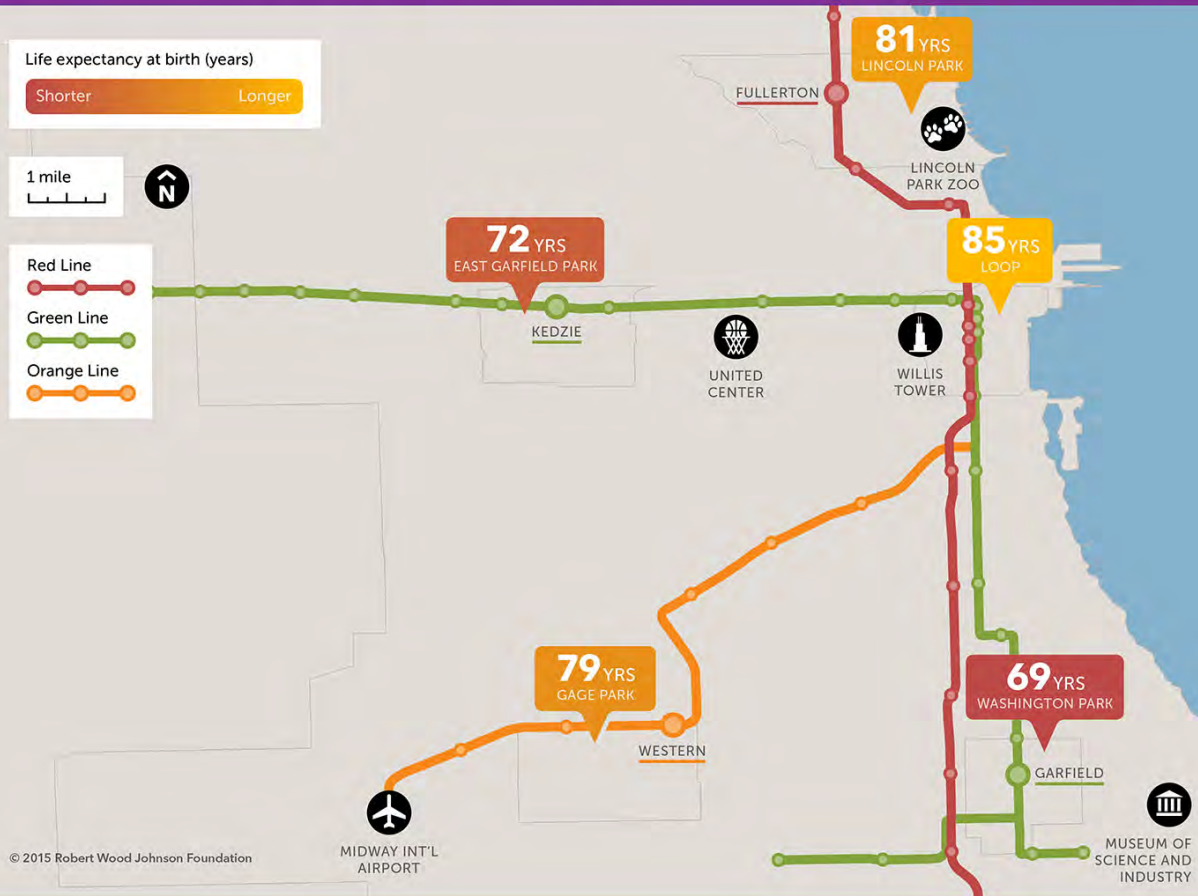
HEALTH HAPPENS IN NEIGHBORHOODS

CHICAGO, ILLINOIS

Short Distances to Large Gaps in Health

Follow the discussion

#CloseHealthGaps



In Chicago, for example, babies born just a few train stops apart can have a **16-year difference** in life expectancy.

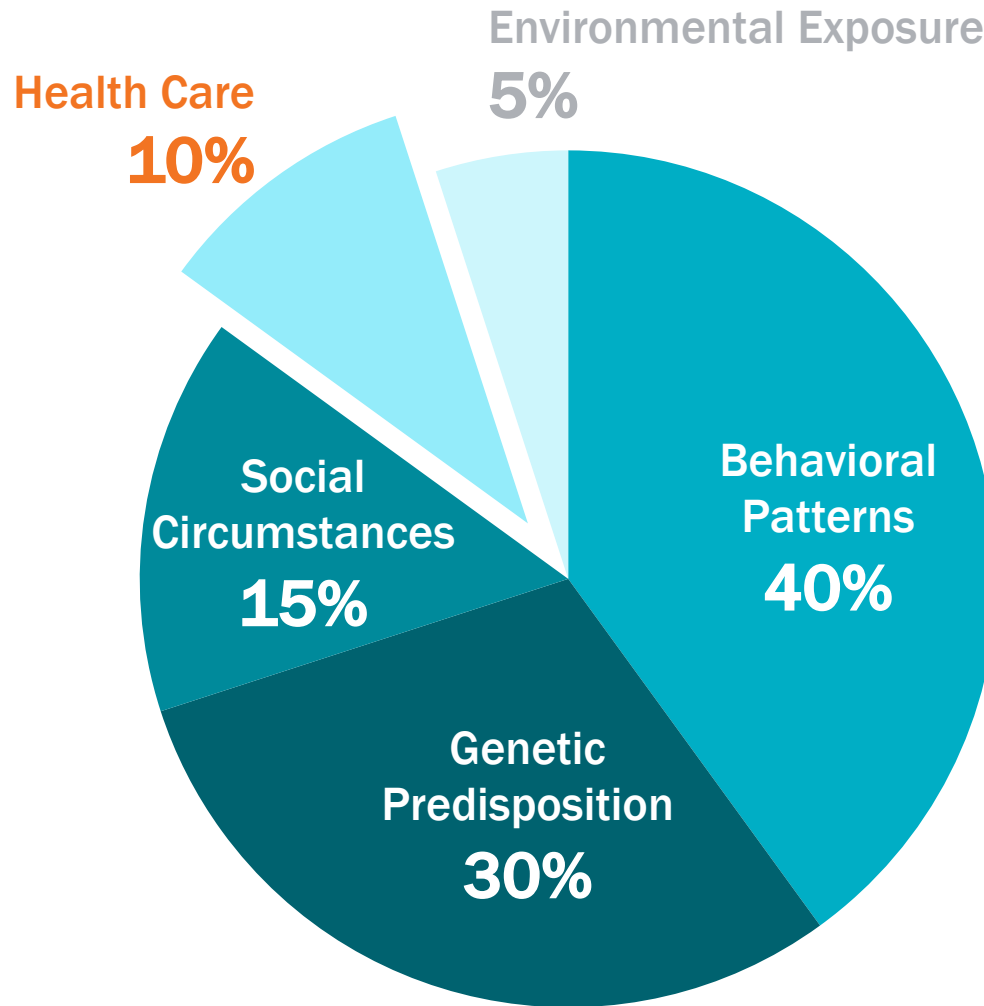
HEALTH HAPPENS IN NEIGHBORHOODS

In New Orleans, life expectancy can vary by **25 years** across neighborhoods.



Source: Robert Wood Johnson Foundation. "Maps to #CloseHealthGaps

HEALTH CARE ≠ HEALTH



Source: McGinnis, J. et al. (2002). "The Case For More Active Policy Attention To Health Promotion." *Health Affairs* 21, no. 2 (March 1, 2002): 78-93

THE SCALE OF **HEALTHCARE SPENDING**

\$3.2 trillion

in healthcare expenditures in 2015

Less than **3%** of this amount (**\$75.4 billion**)
was invested in public health in 2013

HEALTHY COMMUNITIES INITIATIVE



- 24 meetings to date



Robert Wood Johnson Foundation



RWJF COMMISSION TO BUILD A HEALTHIER AMERICA

RWJF Commission
to Build a Healthier America

Click on Tools to convert files
to PDF.

Fundamentally change how we revitalize neighborhoods, fully integrating health into community development.

- Robert Wood Johnson Foundation Commission to Build a Healthier America Report, 2014

Time to Act: Investing in the Health
of Our Children and Communities

Recommendations From the Robert Wood Johnson Foundation
Commission to Build a Healthier America



Robert Wood Johnson Foundation



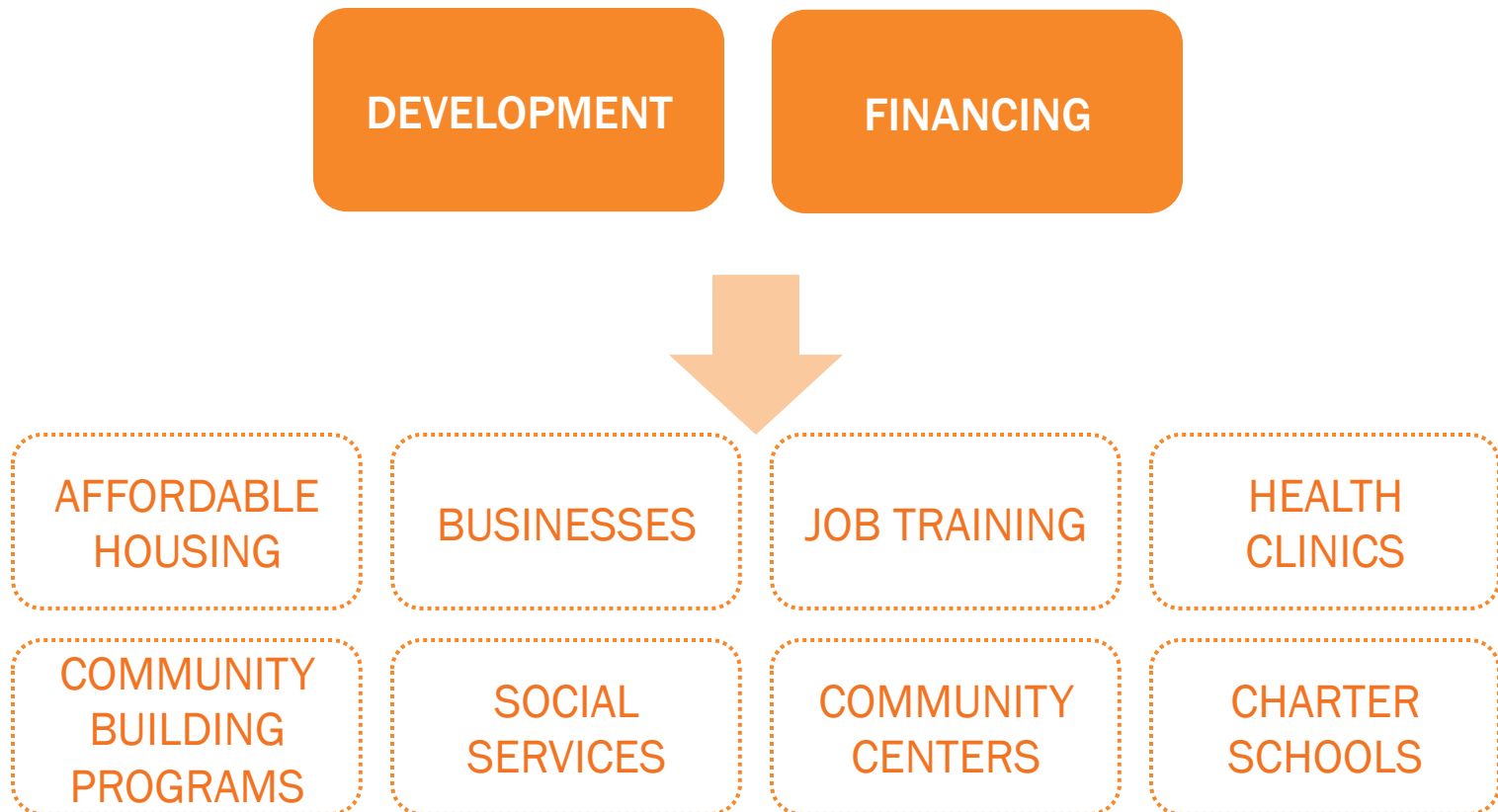
WHAT IS COMMUNITY DEVELOPMENT?

COMMUNITY DEVELOPMENT IS IN THE NEIGHBORHOOD IMPROVEMENT BUSINESS



Baker Ripley Neighborhood Center, Houston TX

COMMUNITY DEVELOPMENT IS A SECTOR



COMMUNITY DEVELOPMENT IS A SECTOR



COMMUNITY DEVELOPMENT IS A SECTOR

- AFFORDABLE HOUSING DEVELOPERS
- NEIGHBORHOOD PLANNERS

COMMUNITY DEVELOPMENT CORPORATIONS (CDCs)

COMMUNITY DEVELOPMENT FINANCIAL INSTITUTIONS (CDFIs)

- FOUNDATIONS
- PRIVATE BANKS
- IMPACT INVESTORS

DEVELOPMENT

FINANCING



AFFORDABLE HOUSING

BUSINESSES

JOB TRAINING

HEALTH CLINICS

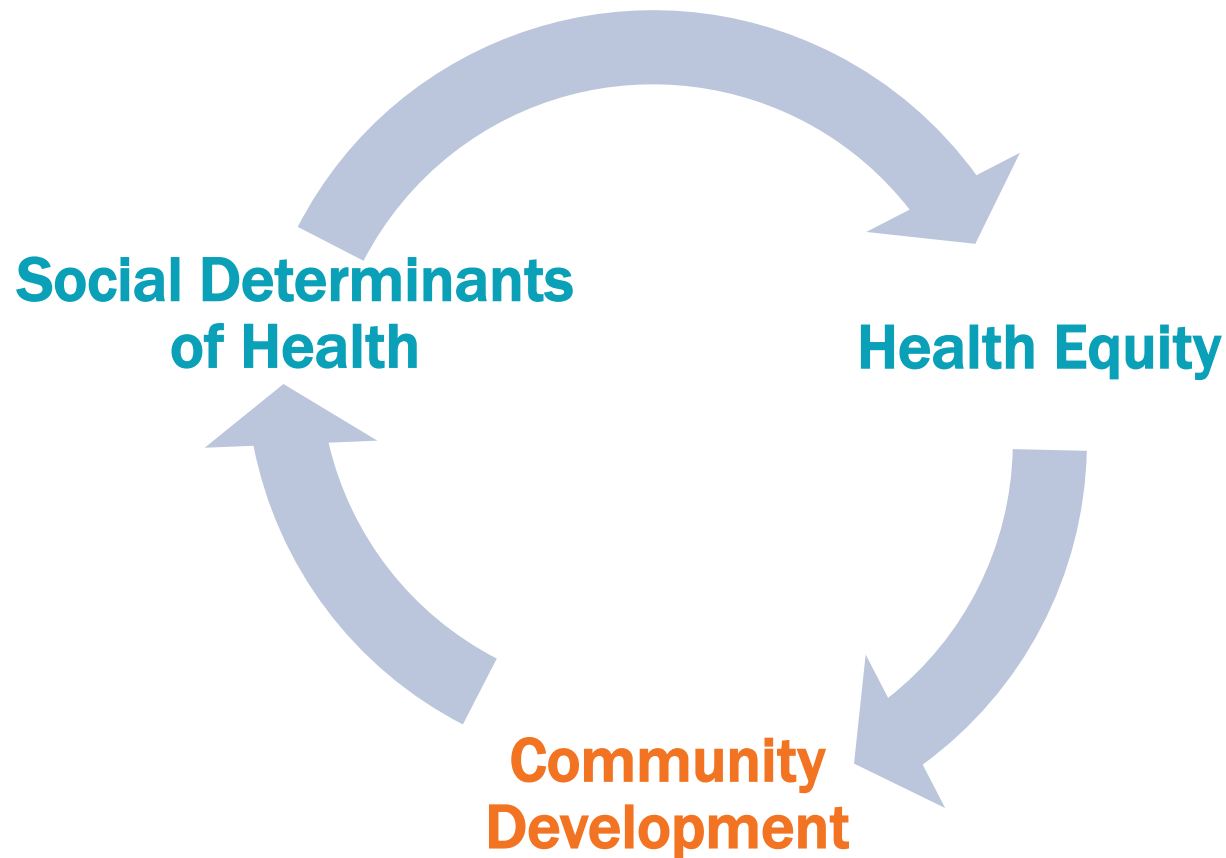
COMMUNITY BUILDING PROGRAMS

SOCIAL SERVICES

COMMUNITY CENTERS

CHARTER SCHOOLS

COMMUNITY DEVELOPMENT: AN ACTION ARM FOR HEALTH EQUITY



See *The Network's Jargon Buster* and
blog posts on [the community development sector](#)
and [its connections to health](#).



EAST LAKE MEADOWS ATLANTA, GEORGIA



VILLAGES OF EAST LAKE ATLANTA, GEORGIA



PURPOSE
BUILT
COMMUNITIES

See the Network's [*Community Close Up*](#) case study on East Lake



VILLAGES OF EAST LAKE ATLANTA, GEORGIA



PURPOSE
BUILT
COMMUNITIES



MODEL FOR NEIGHBORHOOD TRANSFORMATION

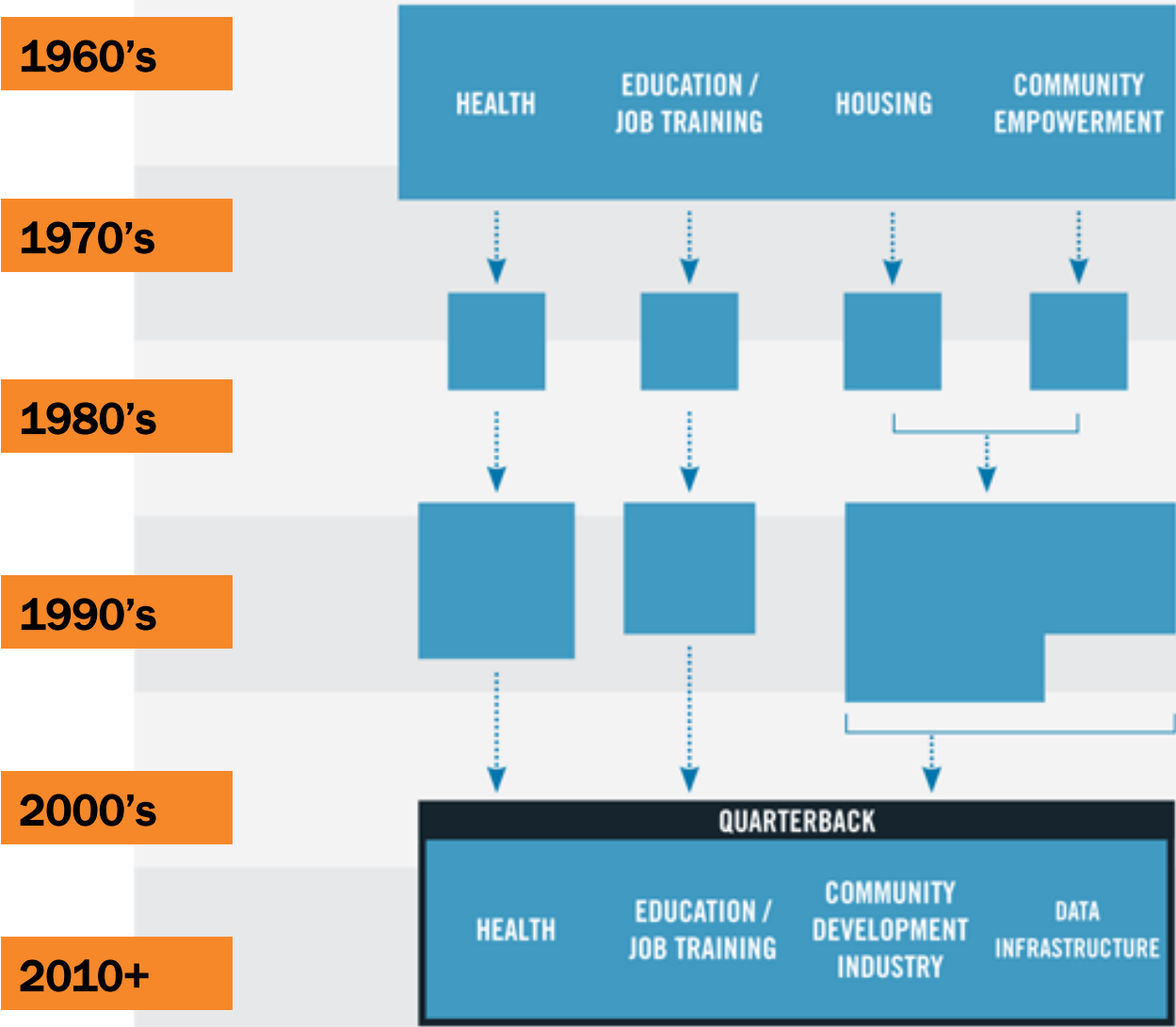


COMMUNITY DEVELOPMENT'S SCOPE AND SCALE

COMMUNITY DEVELOPMENT PAST: URBAN RENEWAL



COMMUNITY DEVELOPMENT OVER THE DECADES



Source: [*Investing in What Works For America's Communities*](#)

COMMUNITY DEVELOPMENT CORPORATIONS & AFFILIATES



46,000

of CDCs nationwide (2006)



75,000

Jobs created by CDC activities (2010)



COMMUNITY DEVELOPMENT FINANCIAL INSTITUTIONS



958

government-certified CDFIs (2015)



1.56 Million

Square feet of healthy food retail
financed (2015)



OPPORTUNITYFINANCE
NETWORK 



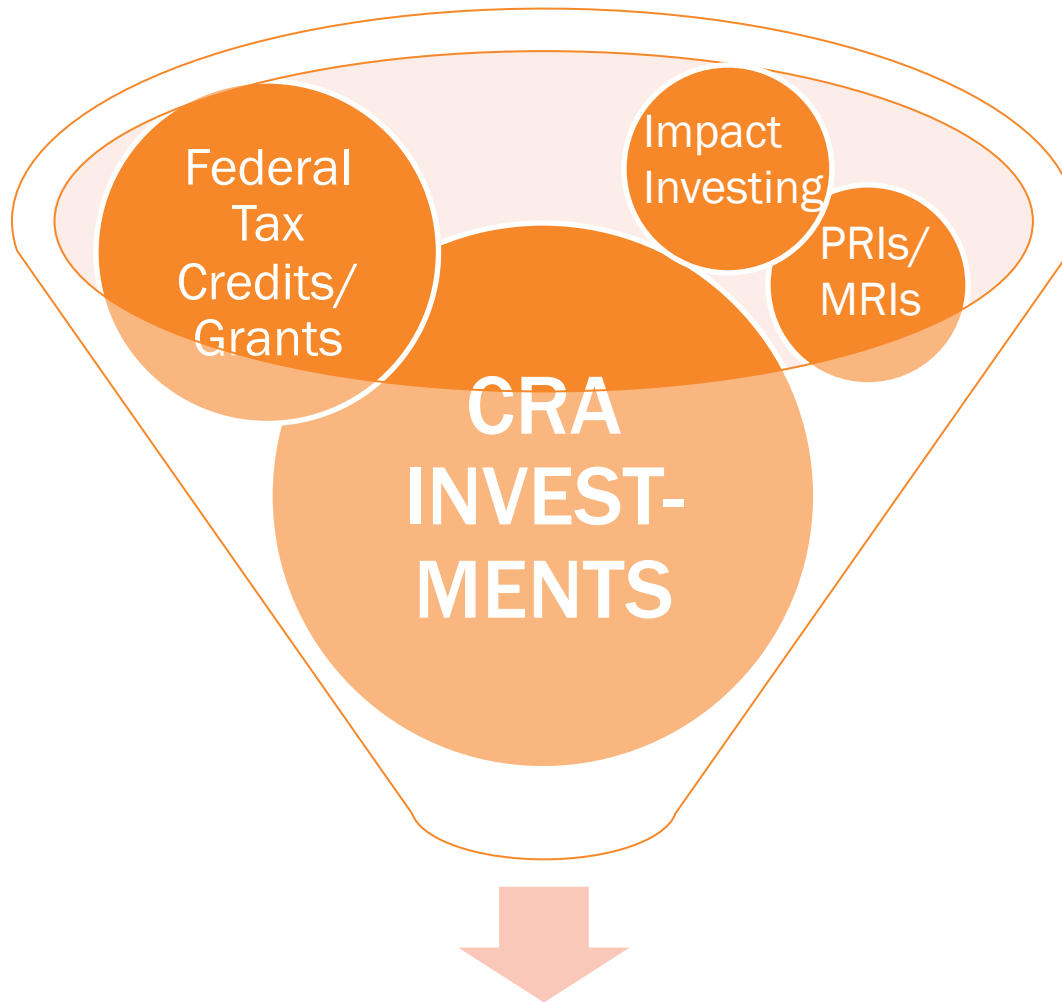
LISC
*Building Sustainable
Communities*



Enterprise™

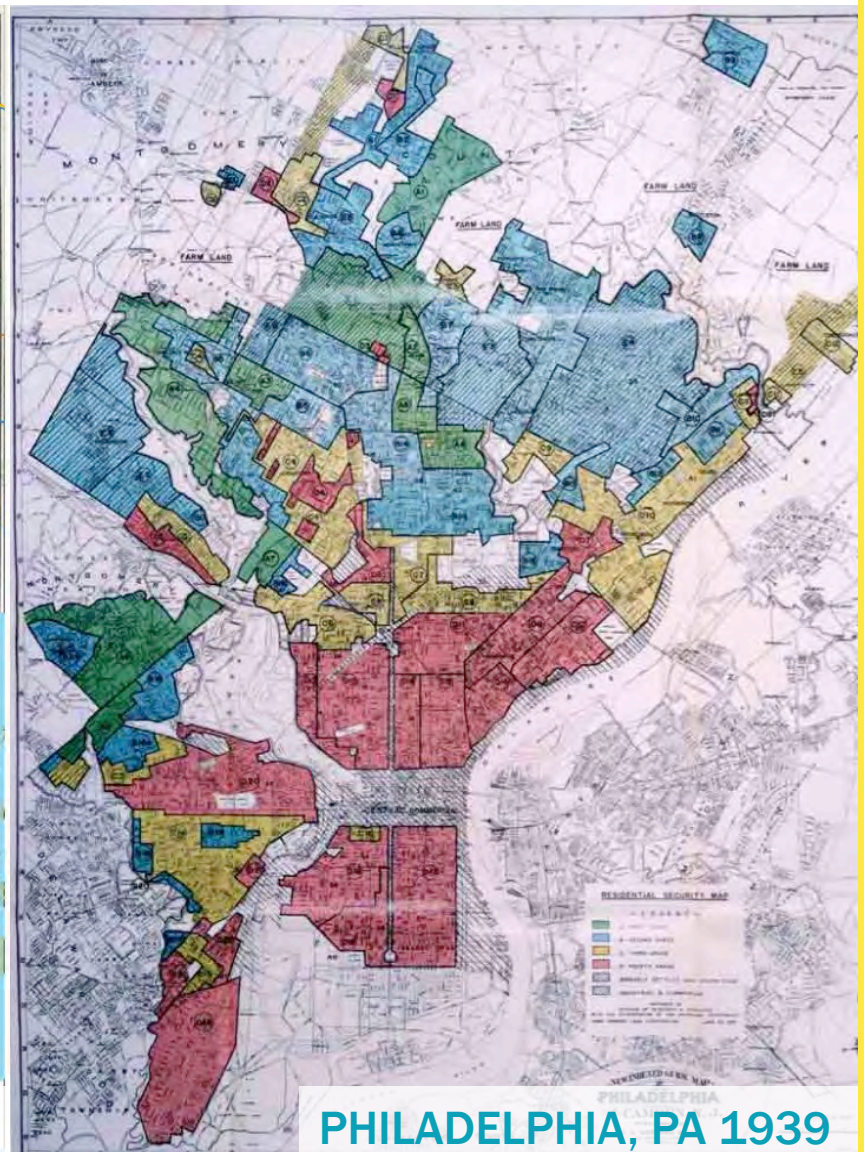
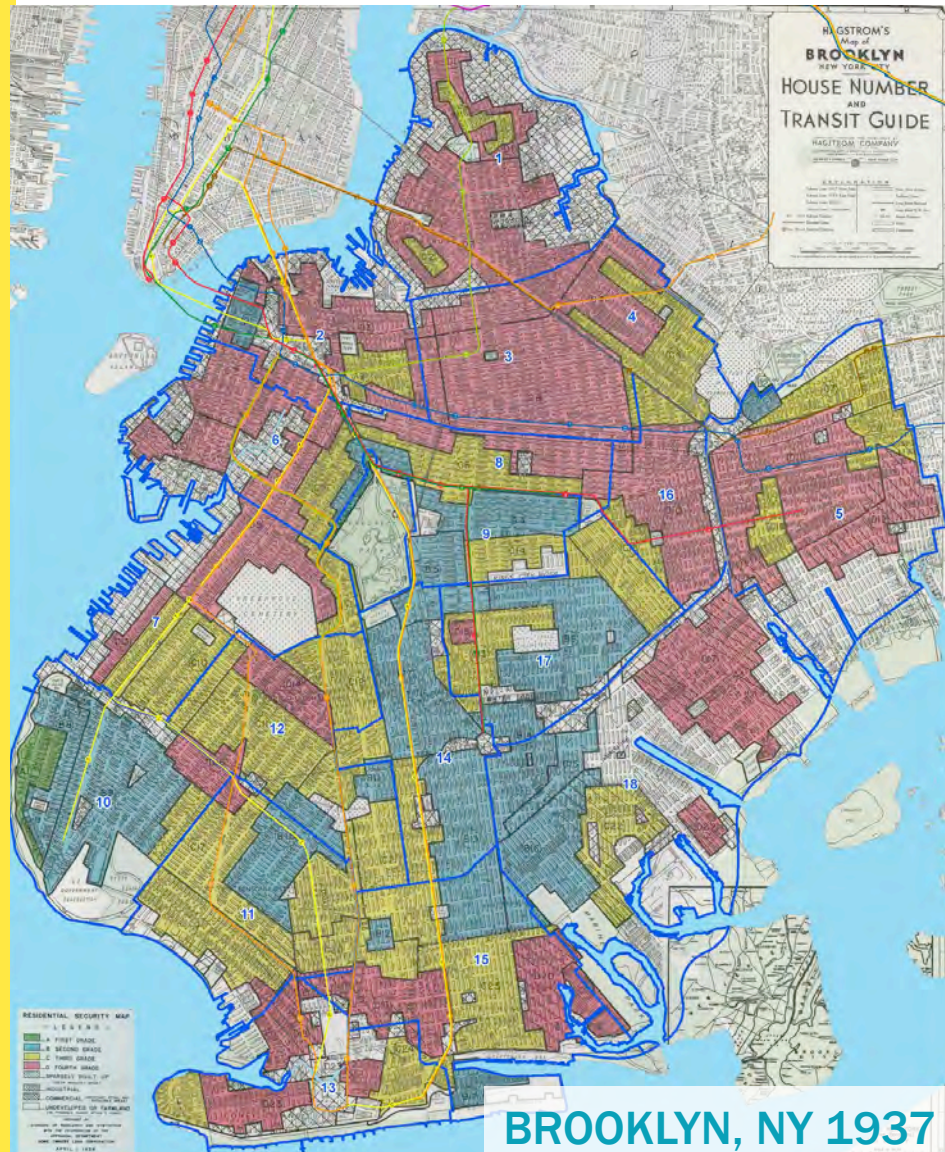
HOW MUCH?

WHERE DOES THE MONEY COME FROM?



\$200 Billion Annually

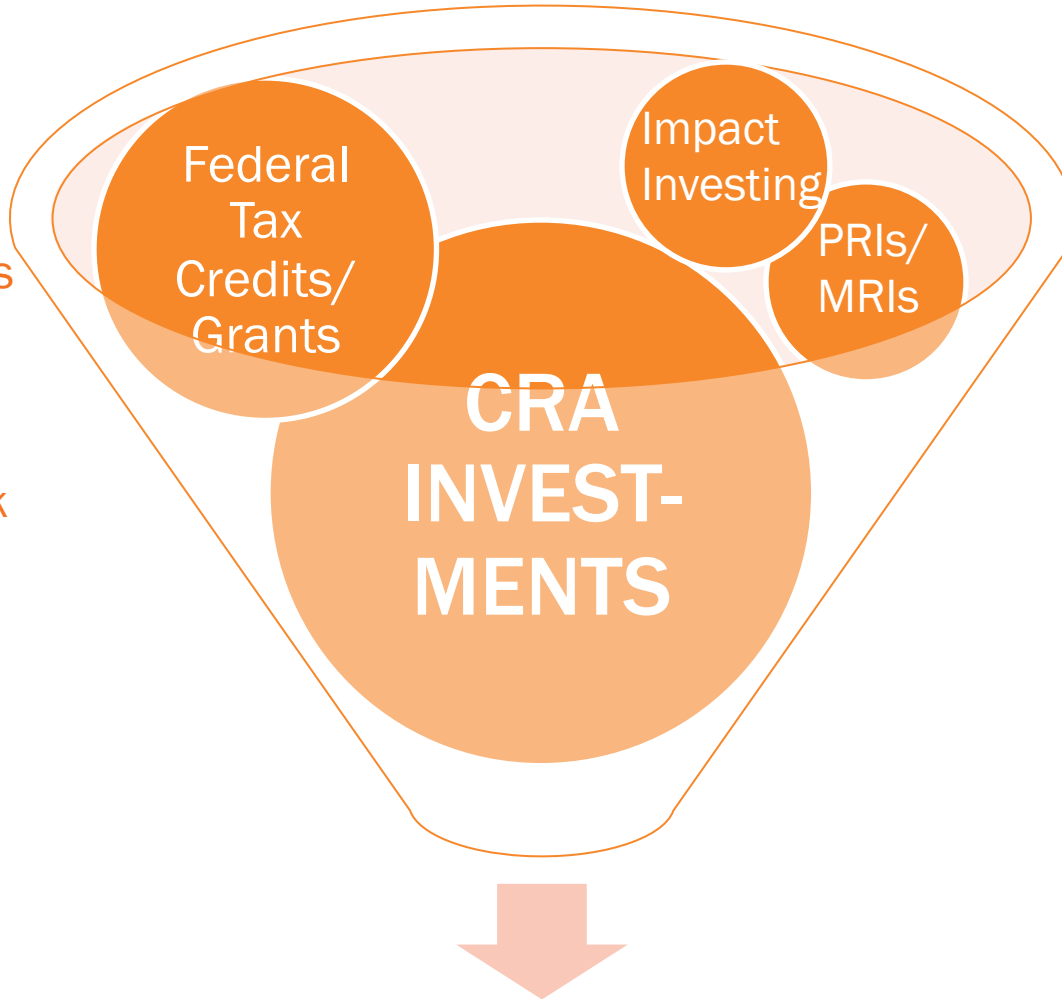
ENSURING EQUITABLE INVESTMENTS: COMMUNITY REINVESTMENT ACT OF 1977



HOW MUCH?

WHERE DOES THE MONEY COME FROM?

- Low-Income Housing Tax Credits
- New Markets Tax Credits
- Community Development Block Grants
- CDFI Loan Funds

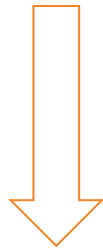


\$200 Billion Annually

COMMUNITY DEVELOPMENT IS IN THE LEVERAGING BUSINESS

\$15 MILLION RAISED IN
CAPITAL CAMPAIGN

\$15 MILLION INVESTED
IN AFFORDABLE
HOUSING

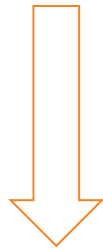


\$15 MILLION
AFFORDABLE
HOUSING

COMMUNITY DEVELOPMENT IS IN THE LEVERAGING BUSINESS

\$15 MILLION RAISED IN
CAPITAL CAMPAIGN

\$15 MILLION INVESTED
IN AFFORDABLE
HOUSING



\$15 MILLION
AFFORDABLE
HOUSING

\$15 MILLION RAISED IN
CAPITAL CAMPAIGN

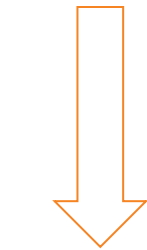
\$5 MILLION INVESTED
IN AFFORDABLE
HOUSING

\$15 MILLION
LEVERAGED FROM
CDFIS AND BANKS

COMMUNITY DEVELOPMENT IS IN THE LEVERAGING BUSINESS

\$15 MILLION RAISED IN CAPITAL CAMPAIGN

\$15 MILLION INVESTED IN AFFORDABLE HOUSING



\$15 MILLION AFFORDABLE HOUSING

\$15 MILLION RAISED IN CAPITAL CAMPAIGN

\$5 MILLION INVESTED IN AFFORDABLE HOUSING

\$15 MILLION LEVERAGED FROM CDFIS AND BANKS



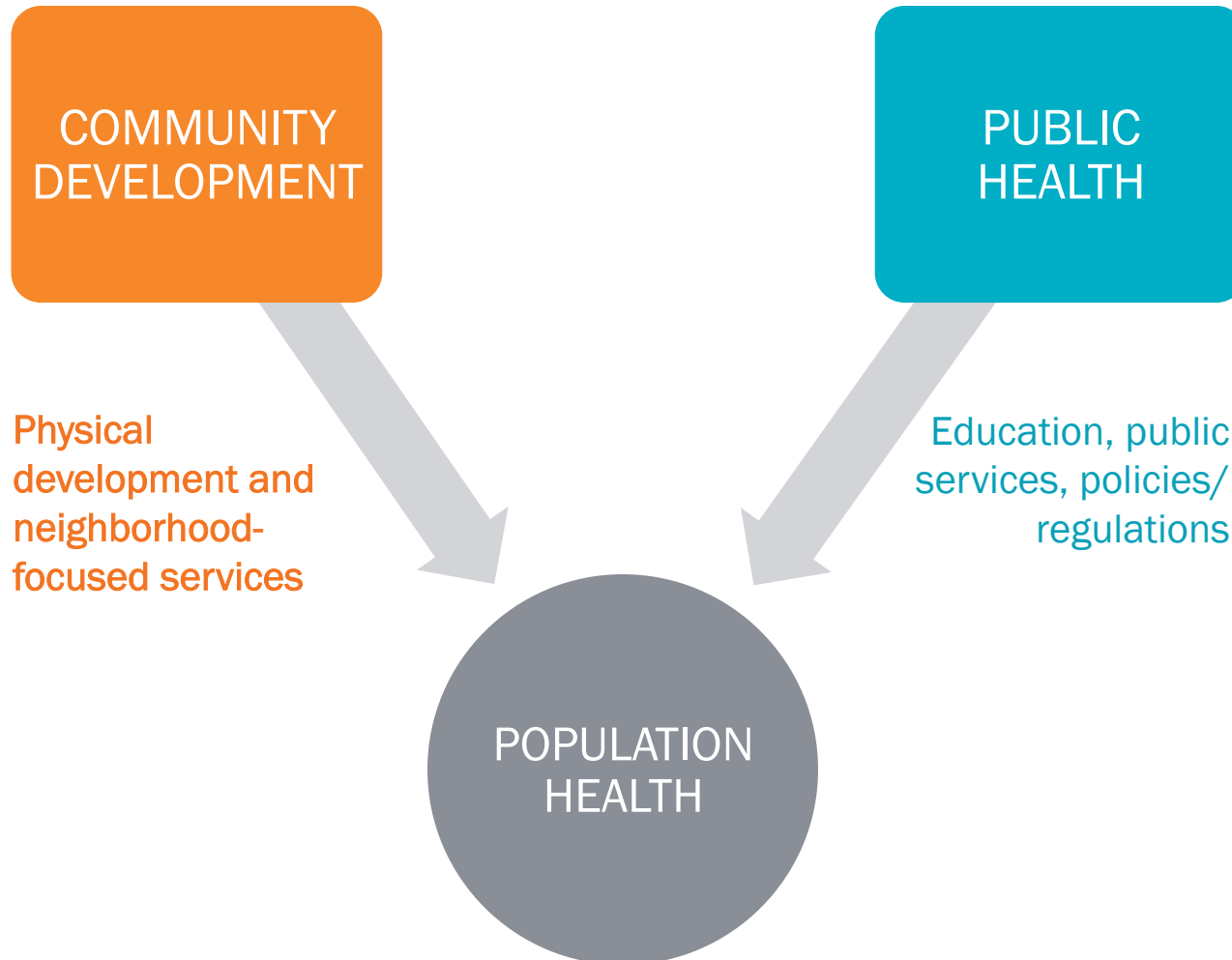
\$20 MILLION AFFORDABLE HOUSING



\$10 MILLION EARLY CHILDHOOD CENTER

MOMENTUM FOR CROSS-SECTOR COLLABORATION

SHARED AIMS



SHARED AIMS, CONVERGING PATHS

COMMUNITY
DEVELOPMENT
& PUBLIC
HEALTH

DETERMINANTS OF
ECONOMIC
OPPORTUNITY =
DETERMINANTS OF
HEALTH



POPULATION
HEALTH



WHAT WE'VE LEARNED ABOUT BOTH SECTOR'S ASSETS

PUBLIC HEALTH

- Data/research capabilities
- Expertise in social determinants of health/health
- Policy expertise/connections to government

COMMUNITY DEVELOPMENT

- Community engagement/deep connection to neighborhoods
- Technical expertise in land use, real estate, etc.
- Financial resources

NATIONAL MOMENTUM: APHA POLICY STATEMENT



AMERICAN PUBLIC HEALTH ASSOCIATION

For science. For action. For health.

[About APHA](#) | [Join](#) | [Renew](#) | [Annual Meeting](#) | [Careers](#) | [Contact Us](#) | [Store](#)

Search APHA.org



LOGIN

What is
Public Health?

Topics &
Issues

Policy &
Advocacy

Publications &
Periodicals

Professional
Development

Events &
Meetings

News &
Media

APHA
Communities

Become a
Member

[APHA](#) > [Policy Statements and Advocacy](#) > [Policy Statements](#) > [Policy Statement Database](#) > [Leveraging Community Development to Improve Health](#)

Print

Opportunities for Health Collaboration: Leveraging Community Development Investments to Improve Health in Low-Income Neighborhoods

[< Policy Statements and Advocacy](#)

[< Policy Statements](#)

[Policy Statements](#)

[Policy Statement Database](#)

[Policy Statement Development Process](#)

Abstract

Evidence for the role of place in health outcomes has been growing. Significant disparities in health outcomes between neighborhoods reflect place-based inequities in the physical, social, and economic assets needed by residents to live productive and healthy lives. The community development industry is a multibillion-dollar sector of the economy investing in low-income neighborhoods, yet to date there has been limited collaboration between the health and community development sectors. With 77 million people in the United States living in high-poverty neighborhoods, there is an ethical imperative to advance such collaboration. Integration of these sectors is needed to ensure that (1) significant public and private investments in neighborhood revitalization maximize opportunities for health improvement, (2) health expertise informs the development of tools and techniques to guide health-related project decision-making and measure health outcomes, and (3) the increasing efforts of the health care sector to address prevention and population health, in light of the Patient Protection and Affordable Care Act, are coordinated and leveraged with community development sector investments. Innovative cross-sector collaborations by the community development sector show promise in mitigating place-based disadvantage and improving the social determinants of health.

Read more at: www.apha.org

NATIONAL MOMENTUM: APHA POLICY STATEMENT



Calls upon public health agencies to solicit input and involvement from the community development sector and collaborate on research, implementation and measurement.

NATIONAL MOMENTUM: RWJF ANNUAL MESSAGE



As part of this Annual Message we are issuing a challenge to individuals and organizations across America *to forge new and unconventional partnerships with the goal of building a Culture of Health that benefits all.*

– *Risa Lavizzo-Mourey, MD, MBA,
President/CEO, Robert Wood
Johnson Foundation*

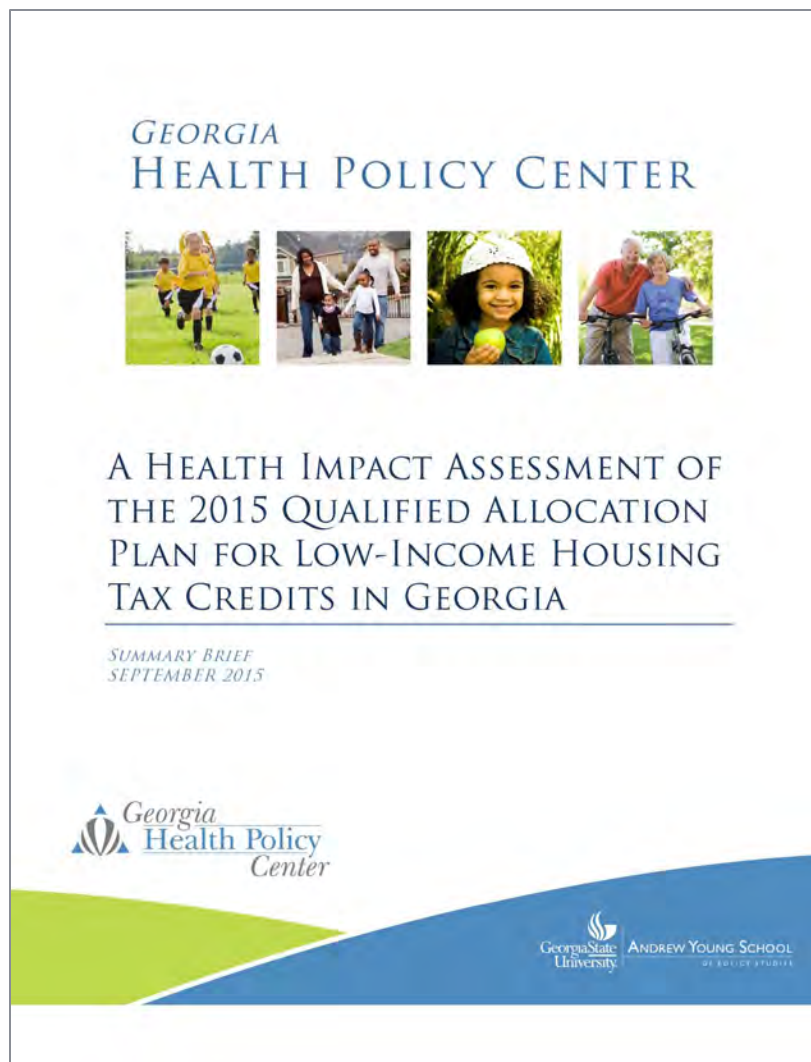
2016 PRESIDENT'S MESSAGE

Joining Forces to Build Momentum

Risa Lavizzo-Mourey, MD, MBA
President and Chief Executive Officer

Read more at www.rwjf.org

STATEWIDE PRACTICE: HIAs INFORMING COMM DEVT, GEORGIA




Read more on the [Georgia Health Policy Center's website](#) and the [Network's Fast Facts blog series](#).

LOCAL PRACTICE: HIAs INFORMING COMM DEVT, DENVER



Read more on the [Mariposa Denver website](#).

NEW INVESTMENT VEHICLES: HEALTHY NEIGHBORHOODS EQUITY FUND



A \$30 million private equity fund investing in the building blocks of healthy communities in Massachusetts

**HEALTHY
NEIGHBORHOODS**
EQUITY FUND | LP

Read more in the Network's [Crosswalk Magazine](#) and www.hnefund.org

NEW INVESTMENT VEHICLES: HEALTHY FUTURES FUND



Source: www.healthyfuturesfund.org

HealthyFuturesFund★

Read more in the [Network's Crosswalk Magazine](#)
and [Expert Insights blog series](#)

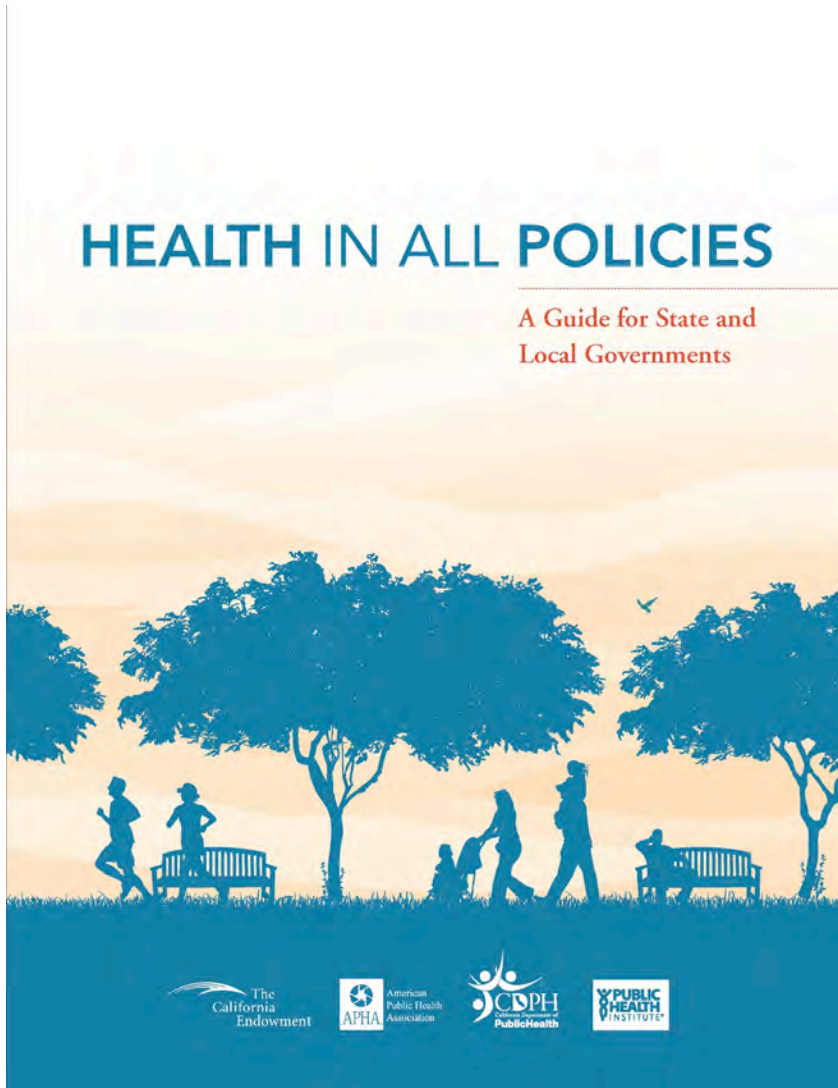
OPPORTUNITIES FOR PUBLIC HEALTH

POLICY LEVER: AFFORDABLE CARE ACT



POLICY LEVER: HEALTH IN ALL POLICIES

A collaborative approach to improving the health of all people by incorporating health consideration into decision-making across sectors and policy areas.



PUBLIC HEALTH PARTNERSHIPS: WEST OAKLAND, CA

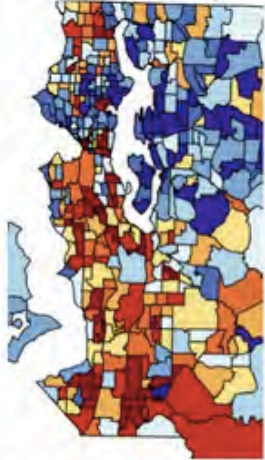


Learn more by visiting the Network's [Community Close Up series](#)

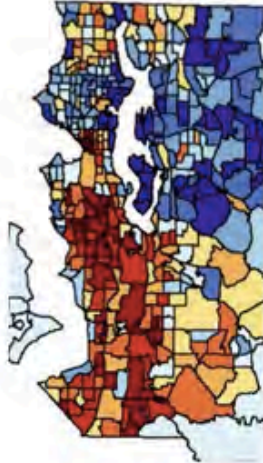
PUBLIC HEALTH PARTNERSHIPS: SEATTLE/KING COUNTY, WA

KING COUNTY HEALTH AND WELL-BEING MEASURES

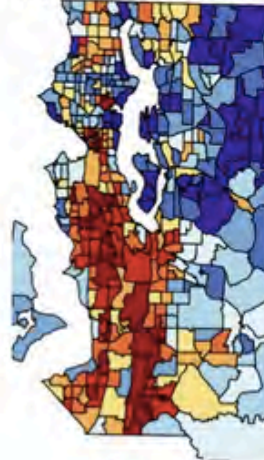
Life Expectancy



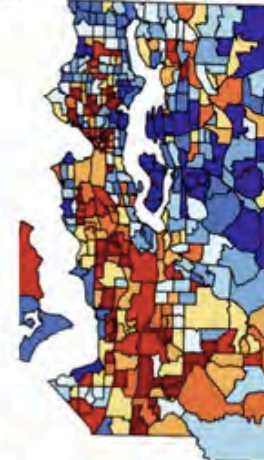
Tobacco Use



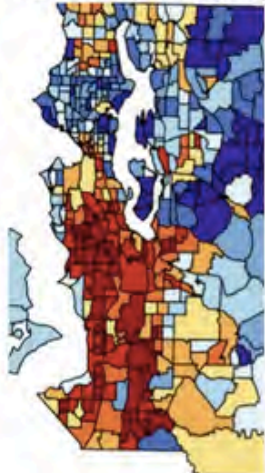
Frequent Mental Distress



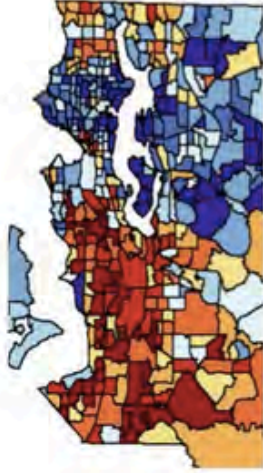
Adverse Childhood Experiences



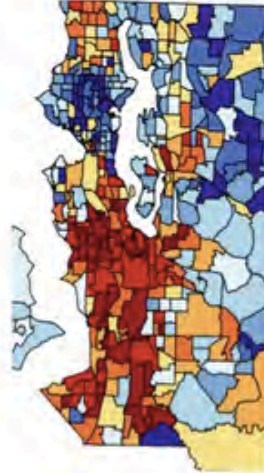
Lack of Physical Activity



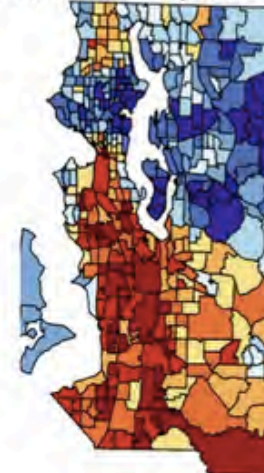
Obesity



Diabetes



Preventable Hospitalization



STATEWIDE INITIATIVES: ACA & MEDICAID



Completed, Creston Ave, Bronx, NY



Underway, Boston Rd, Bronx, NY

STATEWIDE INITIATIVES: FUNDING FOR PREVENTATIVE HEALTH

The Massachusetts Prevention and Wellness Trust

An Innovative Approach to Prevention as
a Component of Health Care Reform



Massachusetts Prevention & Wellness Trust



SIM

State Innovation Model

State Innovation Model (SIM) Initiative



THE NETWORK AS THE CONNECTOR



Build Healthy Places Network



MISSION:

To catalyze and support collaboration across the health and community development sectors, together working to improve low-income communities and the lives of people living in them.



Build Healthy
Places Network



PROGRAM OF



SUPPORTED BY

Robert Wood Johnson Foundation



BUILDS UPON





Build Healthy
Places Network

CONNECTS LEADERS

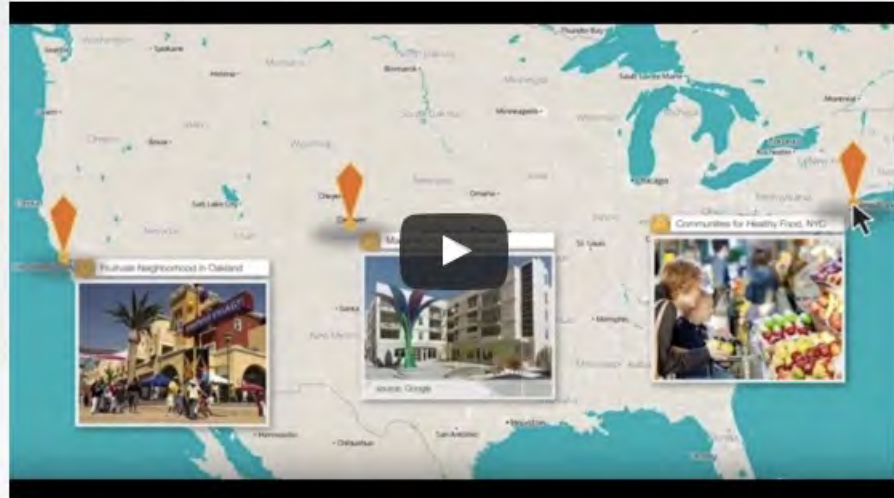
BUILDS THE KNOWLEDGE BASE FOR COLLABORATION

CURATES RESOURCES AND EXAMPLES OF WHAT WORKS

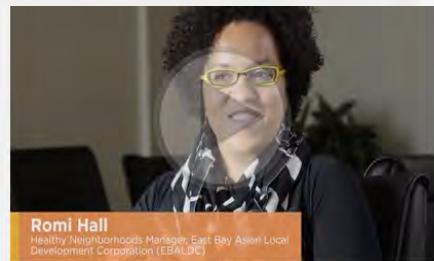
BUILDHEALTHYPLACES.ORG

By joining forces, community developers and health professionals can have a more powerful impact.

[Learn More About the Network](#)




Build Healthy Places Network
#NetworkCommons



- [#NetworkCommons](#) |
 [Community Close Up](#) |
 [Crosswalk Magazine](#) |
 [Dispatches](#) |
 [Events](#) |
 [Expert Insights](#) |
 [Fast Facts](#) |
 [Making the Case](#) |
 [The Network's Picks](#)

The Pulse

A monthly roundup of what we're reading and where we've been at the intersection of community development and health.

[View Past Issues](#) |
 [Sign Up](#)

APRIL
There's a SIB for that

MARCH
Place matters to children's health

FEBRUARY
Tackling the social inequities that shape health





Crosswalk



Whose City Is it? The Promise and Peril of Gentrification



A Financial Remedy on the Reservation

Read our other articles on the Network's [Crosswalk Magazine](#)

TOOLS FOR COLLABORATION: MEASUREUP

MeasureUp

Welcome to MeasureUp, a microsite of resources and tools to help you measure and describe your programs' impact on families and communities and on factors related to health. MeasureUp provides examples, tools, and resources to help you make your case, without having to become an economist.

You can [dip your toe into the topic](#) or [dive deep](#). You can learn about [how to map](#) issues in your community or see how other groups are measuring impact and [the tools](#) they use. [Read stories](#) about communities that have used health metrics in community development work. And if you want to [design your own study](#), you can do that too. If you need to make your case to a funder or policymaker, [read about the evidence](#) for a link between health and community.

Here's what's available:



Mapping Tools

Learn how to map your community's strengths and target areas.



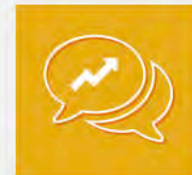
Measurement Tools

See how others are measuring health-related impact and find resources to help you get started.



Evidence Base

Learn more about the effects of neighborhood on health.



Measurement Stories

Read and watch stories from the field about measurement in action.



Deeper Dive

Want more? Go deeper with these ideas and innovations.

WWW.BUILDHEALTHYPLACES.ORG/MEASUREUP



Build Healthy
Places Network

TOOLS FOR COLLABORATION: JARGON BUSTER

Jargon Buster

Working across sectors begins with speaking the same language. If you're lost in a sea of acronyms, this tool can help. Below we aim to demystify common industry jargon.

CDC (Centers for Disease Control and Prevention)

+

CDC (Community Development Corporation)

+

Community Benefits (Agreements)

+

Community Benefits (Hospital)

+

Community Development

-

Related Terms: CDC (Community Development Corporation), Community Development Financial Institutions (CDFIs), Social Determinants of Health, Health Equity

Community development is a multi-billion-dollar sector of the American economy that invests in low- and moderate-income communities through the development and financing of affordable housing, businesses, community centers, health clinics, job training programs, and services to support children, youth, and families. The sector has its roots in the urban revitalization efforts of the late 19th century but expanded as a result of the War on Poverty programs of the 1960s. Today, the

Tags

#NetworkCommons

#ZIPmatters

Affordable Care Act

Affordable

Housing

collaboration

Community Close Up

Community

Development

Community Health Needs

Assessment Community

Quarterback County Health

WWW.BUILDHEALTHYPLACES.ORG/JARGON-BUSTER



Build Healthy
Places Network



Build Healthy Places Network

MAIN OFFICE:
870 MARKET STREET,
SUITE 1255
SAN FRANCISCO, CA 94102
415.590.3034