

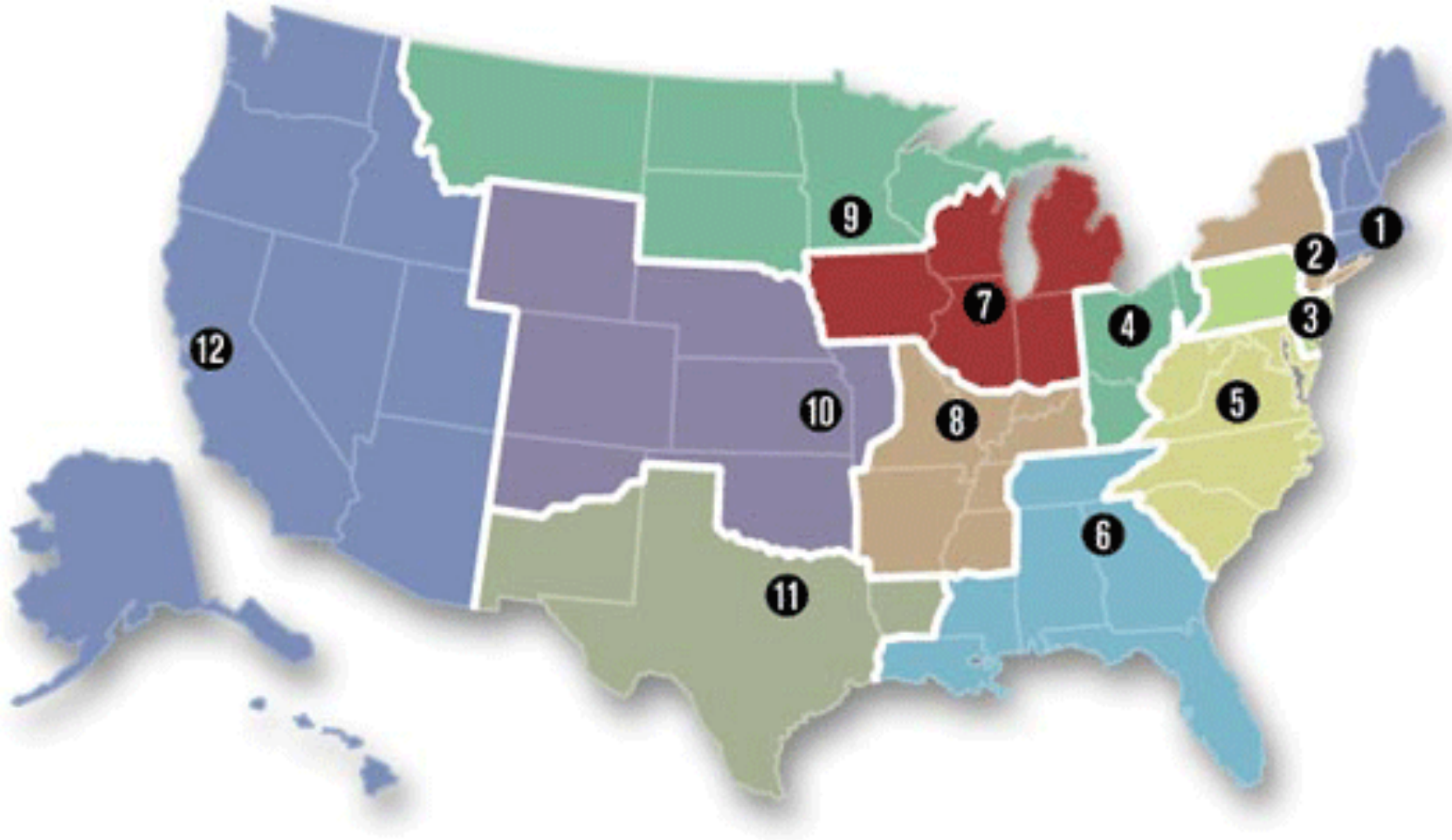


HEALTH HAPPENS IN NEIGHBORHOODS (AND WHAT WE CAN TO DO ABOUT IT)

DAVID ERICKSON, FEDERAL RESERVE BANK OF SAN FRANCISCO
DOUGLAS JUTTE, MD, MPH, BUILD HEALTHY PLACES NETWORK

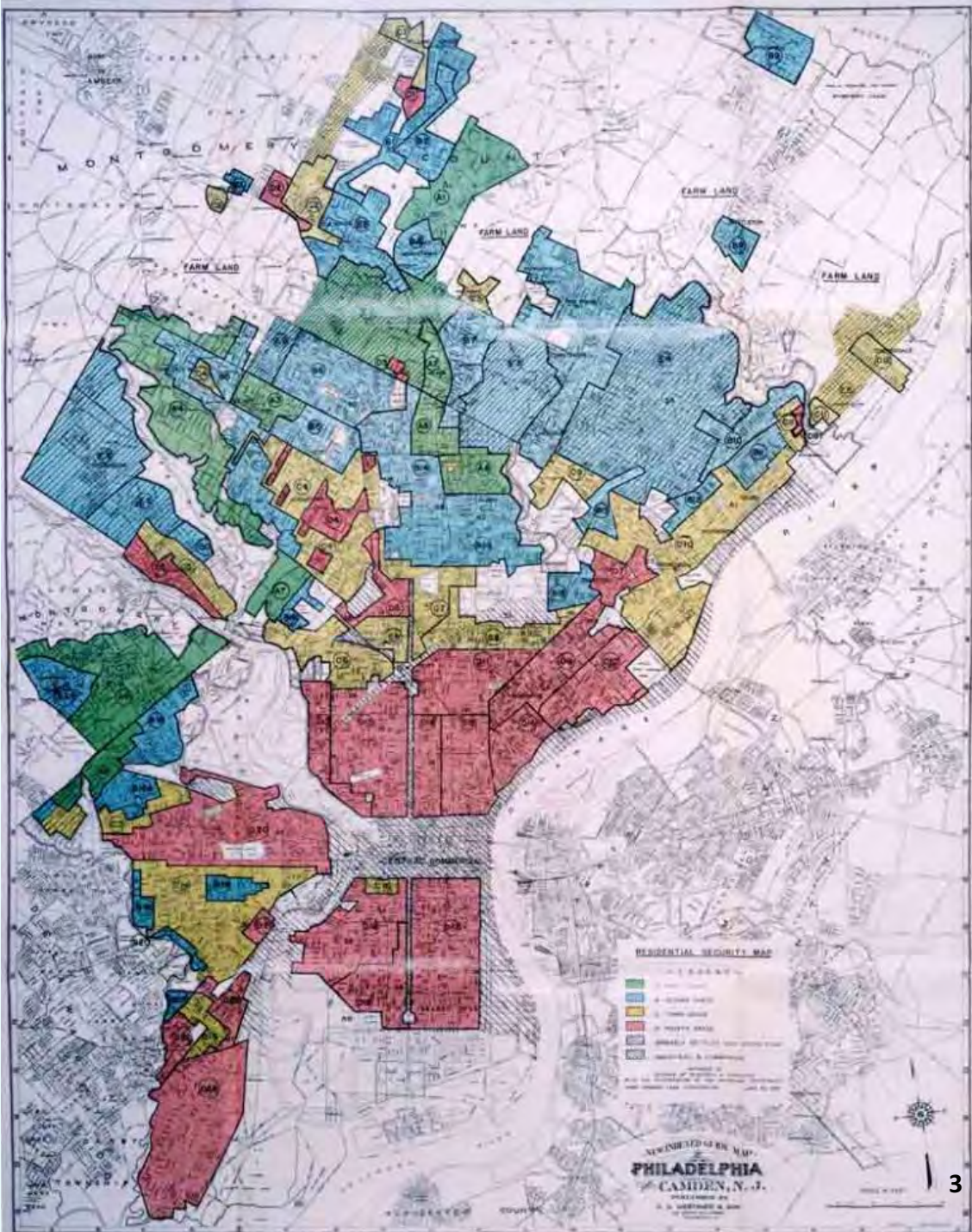
Building Healthy Communities Ohio, October 2014

THE FEDERAL RESERVE SYSTEM



REDLINING

Community Reinvestment Act of 1977 (CRA)



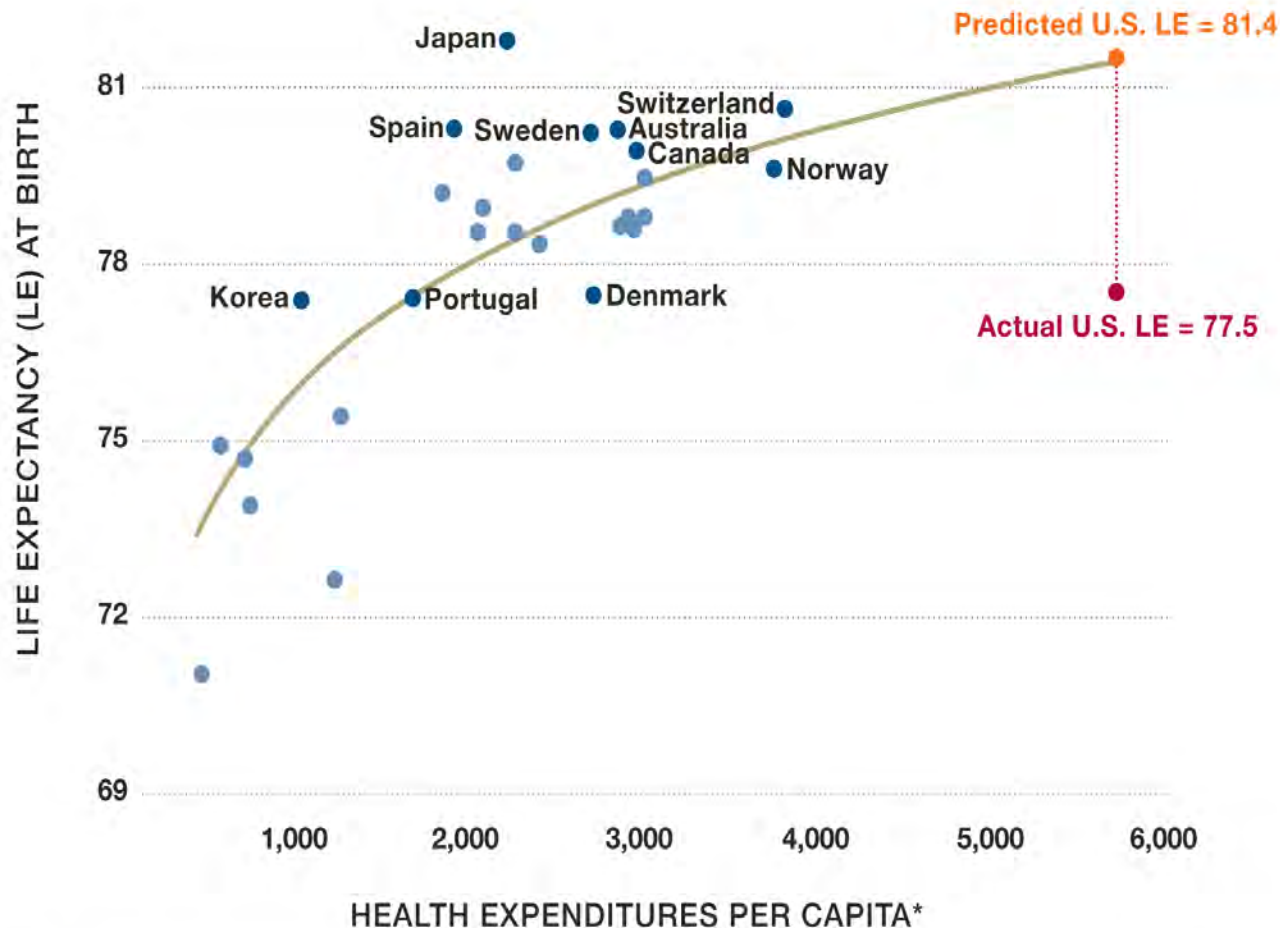
Philadelphia, 1949

AMERICANS HAVE WORSE HEALTH AND SHORTER LIVES



America Is Not Getting Good Value for Its Health Dollar

The U.S. spends more money per person on health than any other country, but our lives are shorter—by nearly four years—than expected based on health expenditures.



America Is Not Getting Good Value for Its Health Dollar

The U.S. spends more money per person on health than any other country, but our lives are shorter—by nearly four years—than expected based on health expenditures.



\$2.9

**TRILLION
ANNUALLY**

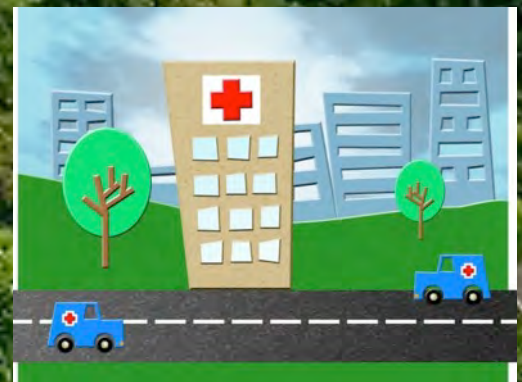
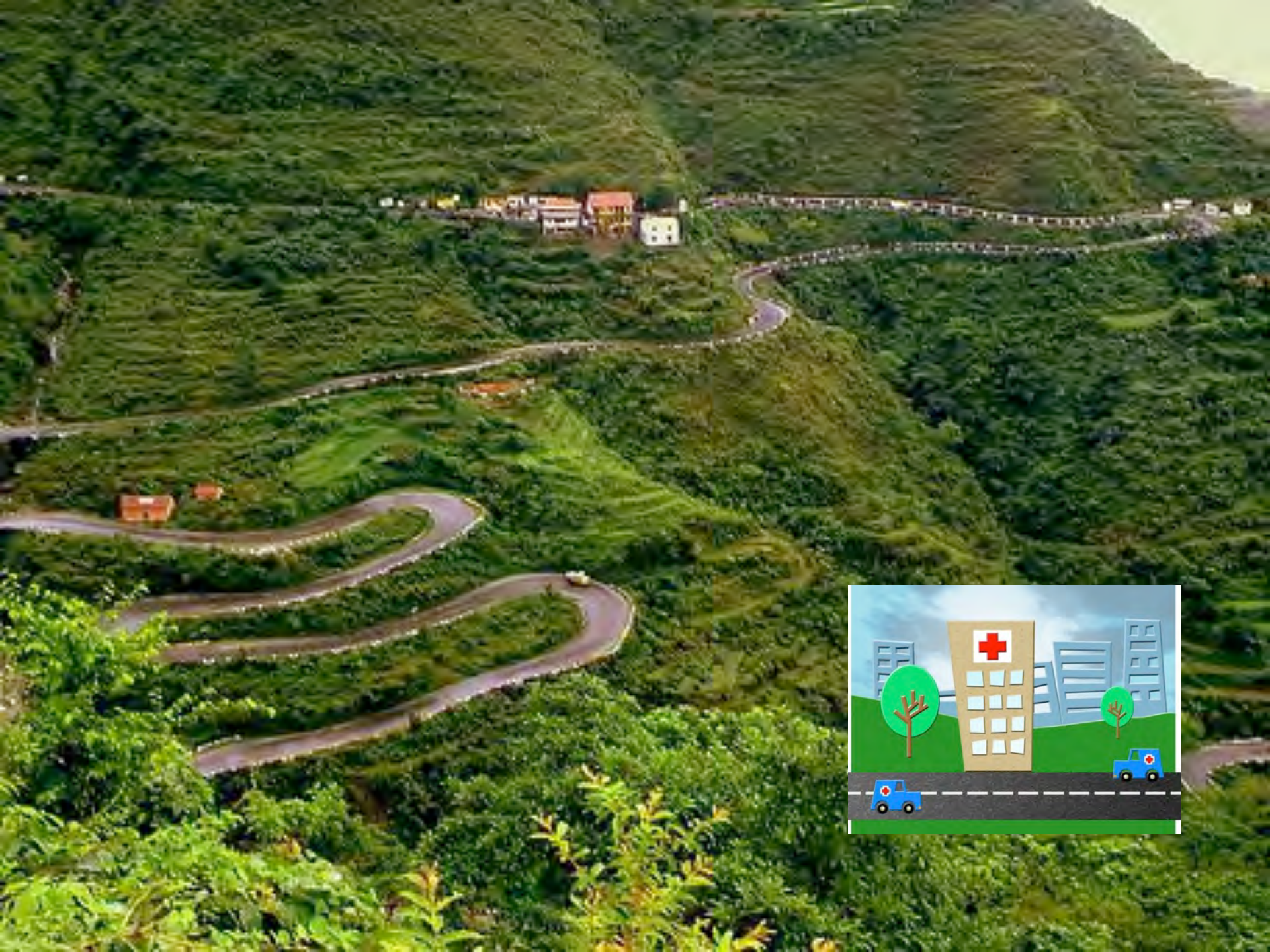
Health

≠

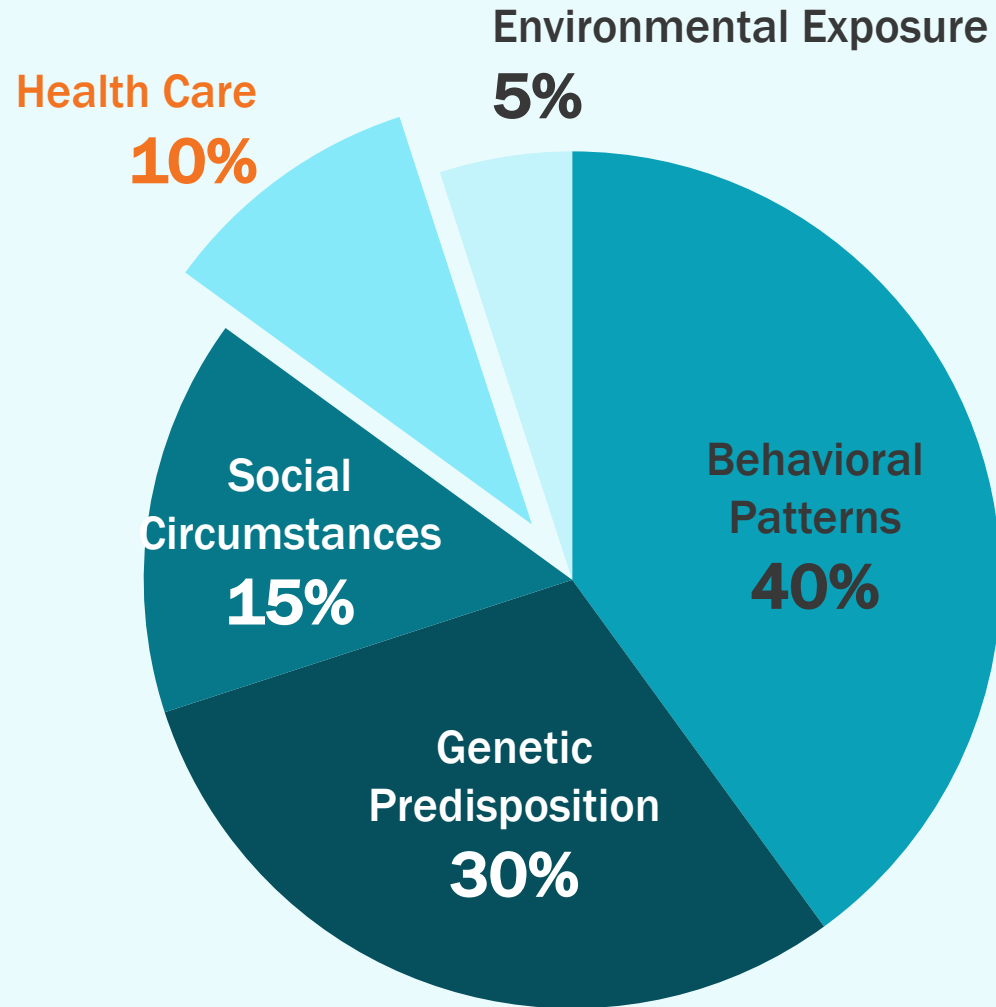
Health Care

**“Health is a state of
complete physical, mental
and social well-being
and not merely the absence
of disease or infirmity”**

Preamble to the Constitution of the World Health Organization
June 1946



CONTRIBUTIONS TO PREMATURE DEATH

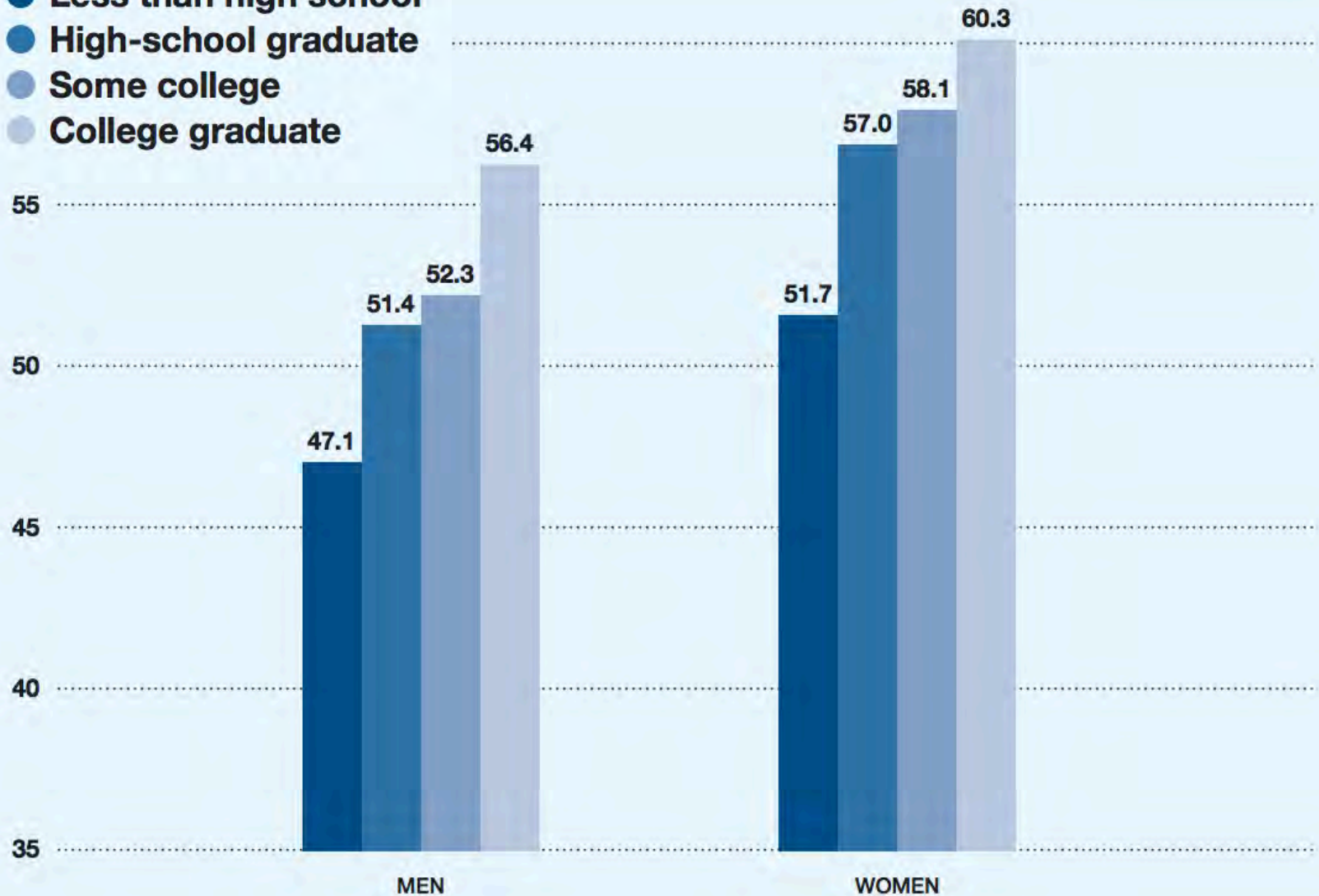


HEALTH = EDUCATION

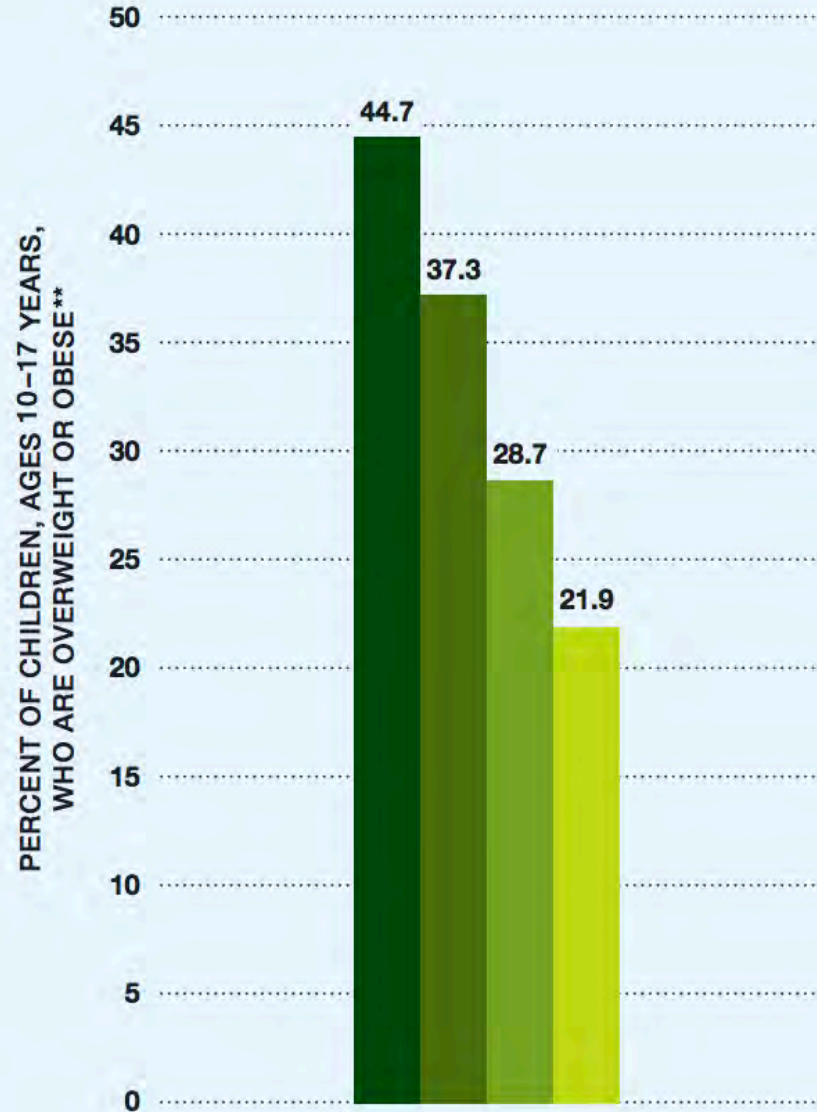
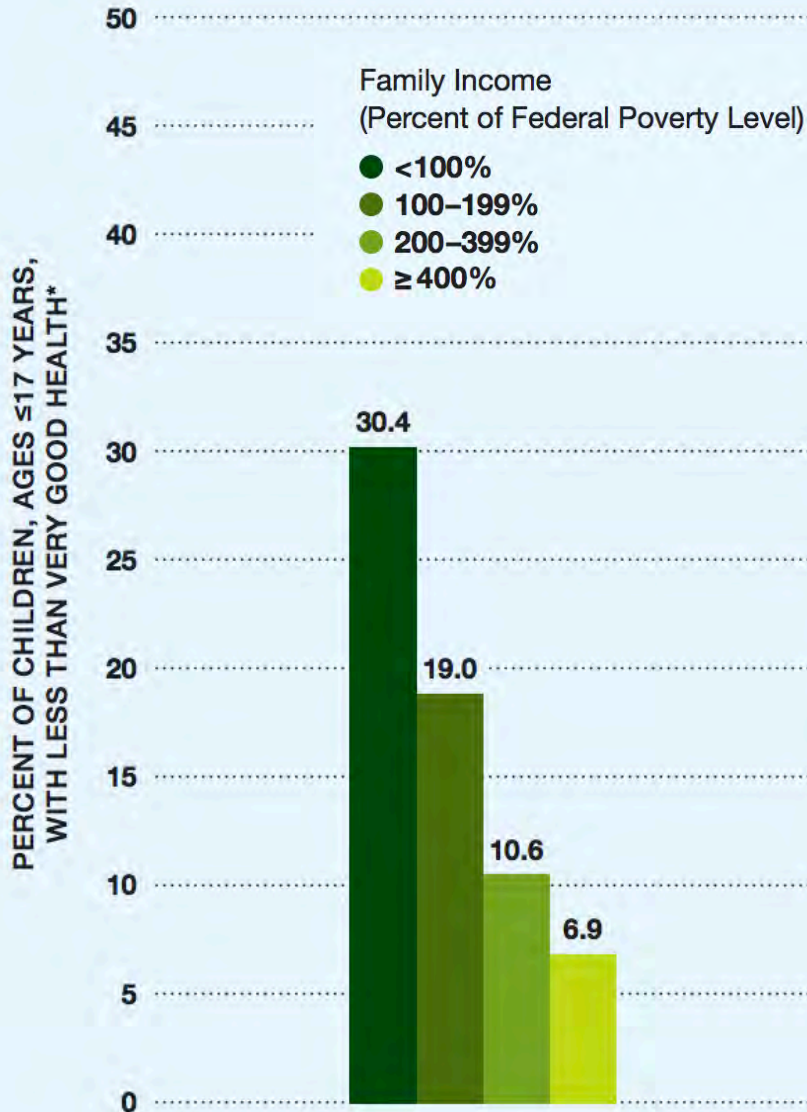
Educational Attainment

- Less than high school
- High-school graduate
- Some college
- College graduate

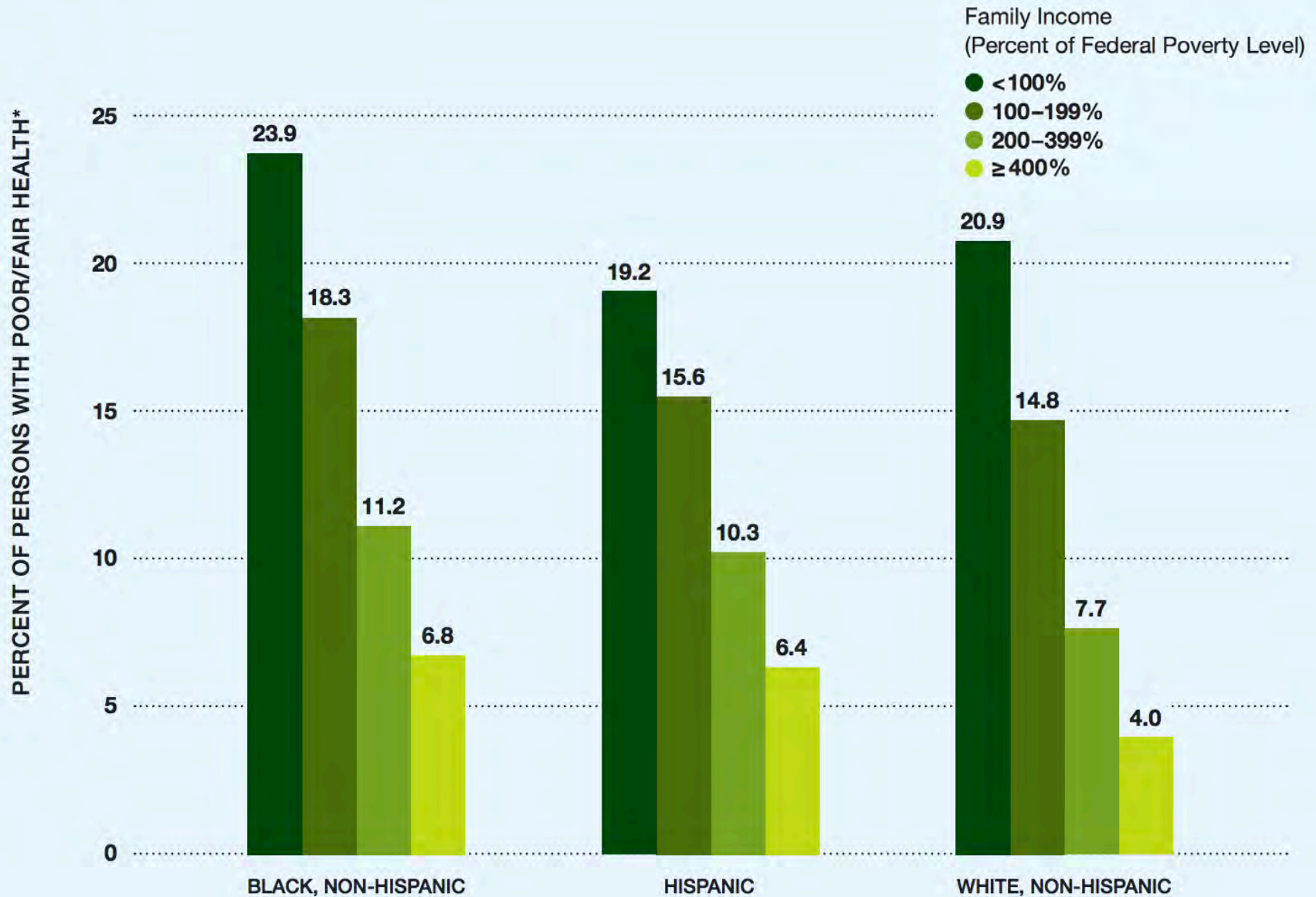
LIFE EXPECTANCY AT AGE 25



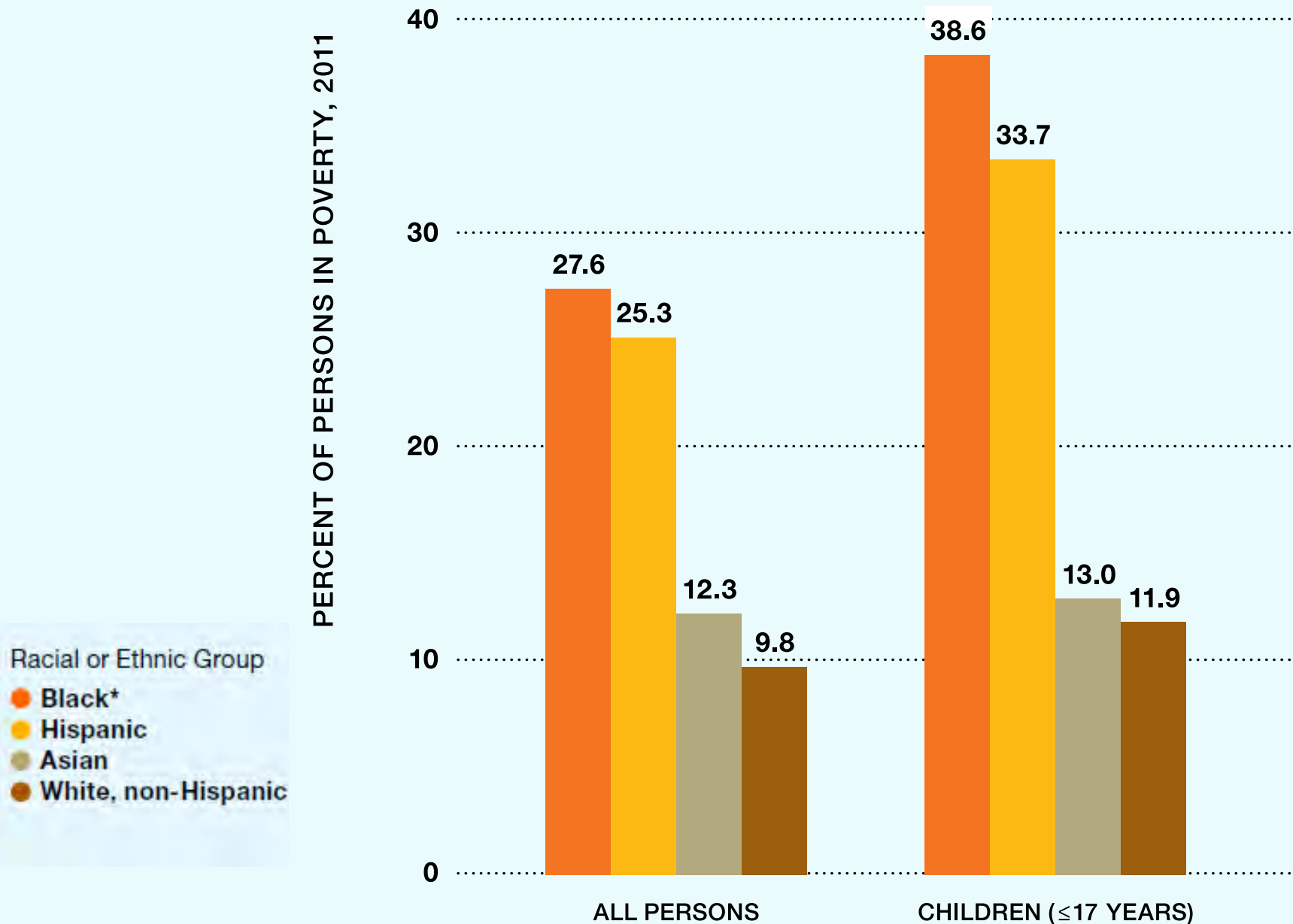
HEALTH = INCOME



ACROSS ALL RACIAL/ETHNIC GROUPS



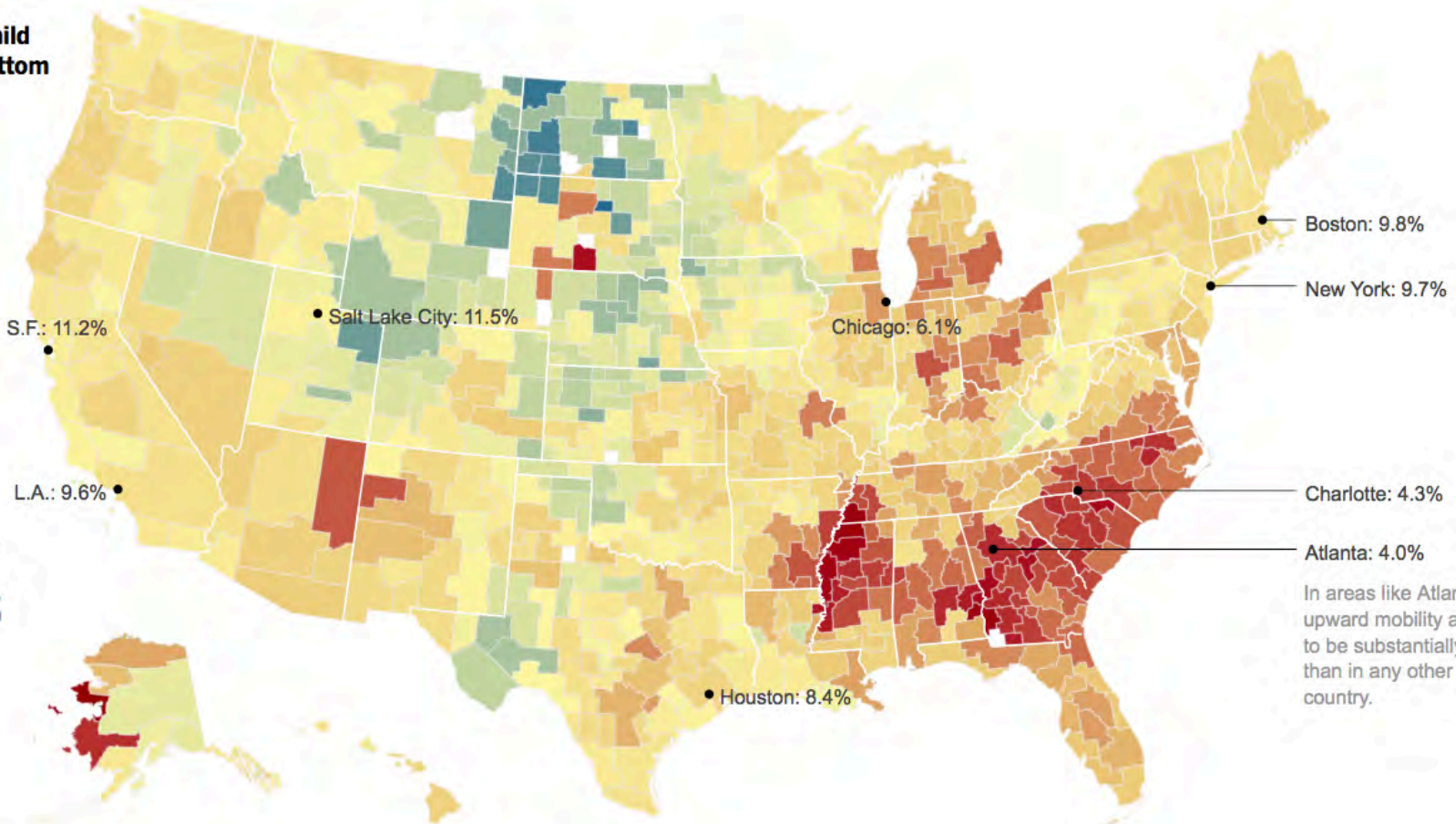
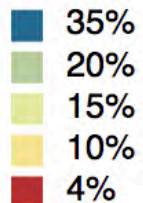
...BUT POVERTY IS CONCENTRATED



IN CLIMBING THE INCOME LADDER, LOCATION MATTERS

RAJ CHETTY, ECONOMIST

The chance a child raised in the bottom fifth rose to the top fifth



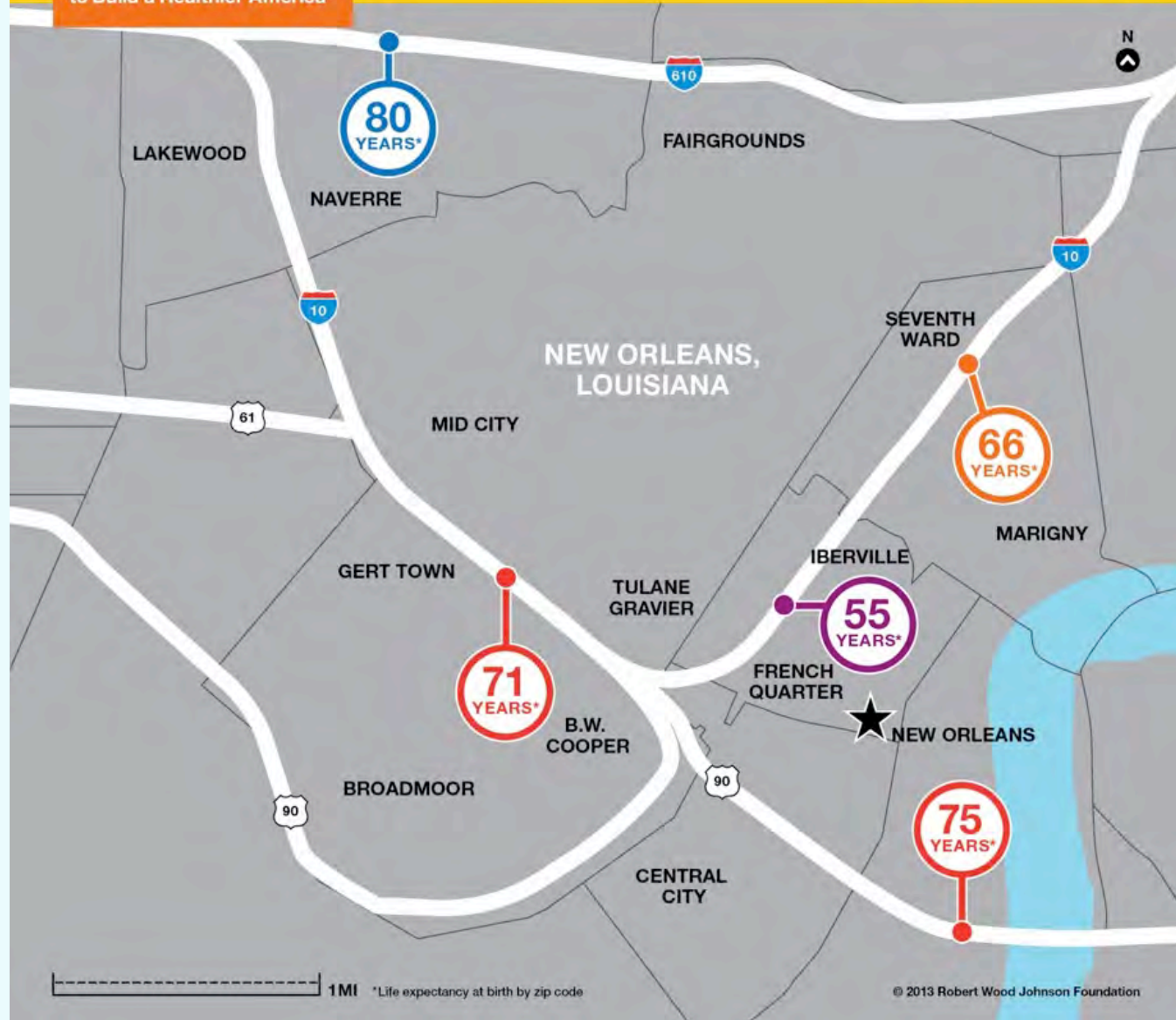
The top fifth is equal to family income of more than \$70,000 for the child by age 30, or more than \$100,000 by age 45.

In areas like Atlanta, upward mobility appears to be substantially lower than in any other rich country.

HEALTH HAPPENS IN NEIGHBORHOODS

RWJF Commission
to Build a Healthier America

Robert Wood Johnson Foundation



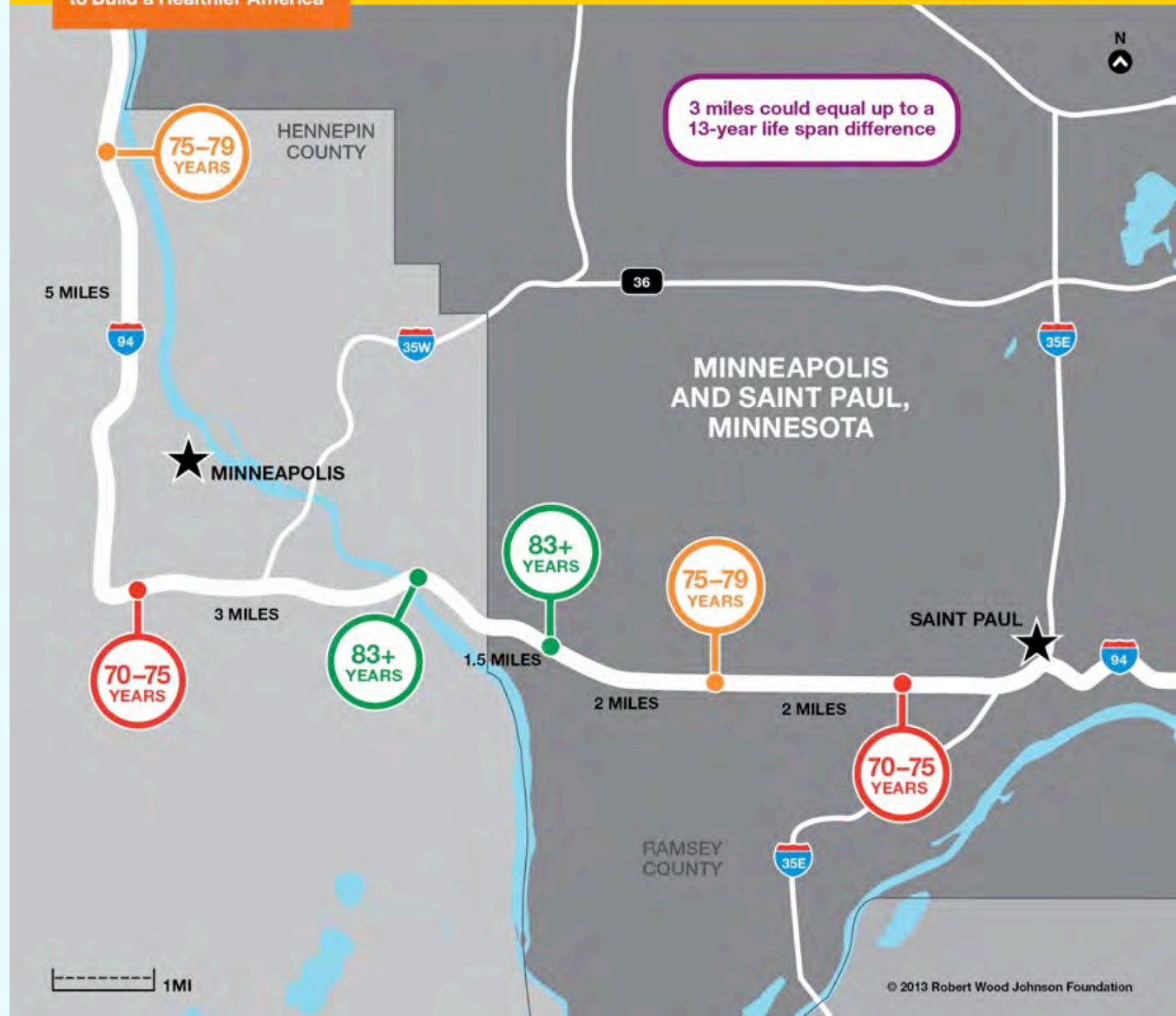
1 MI *Life expectancy at birth by zip code

© 2013 Robert Wood Johnson Foundation

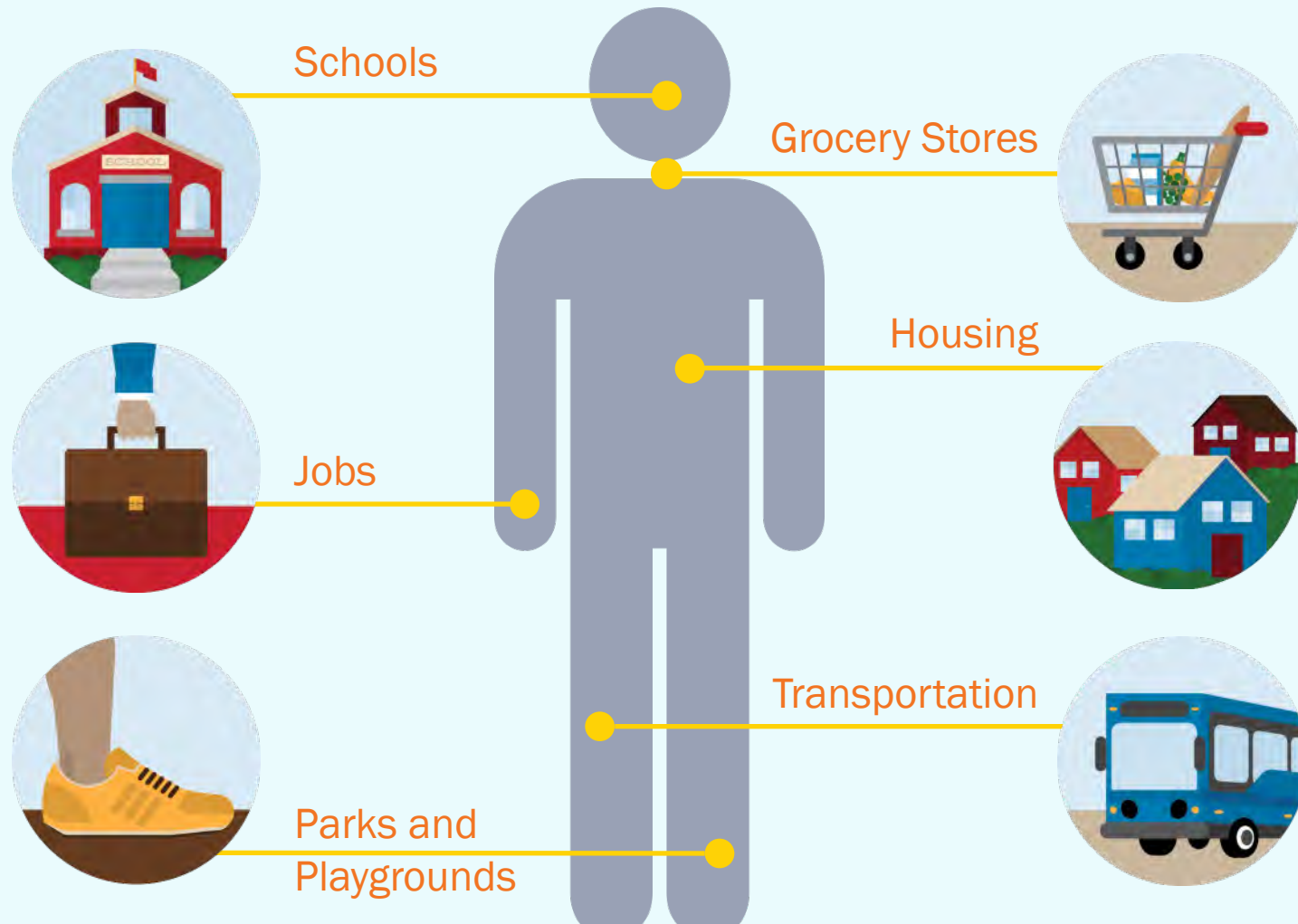
HEALTH HAPPENS IN NEIGHBORHOODS

RWJF Commission to Build a Healthier America

Robert Wood Johnson Foundation



PEOPLE GET SICK BECAUSE OF THEIR SOCIAL AND PHYSICAL ENVIRONMENTS



COMMUNITY DEVELOPMENT INVESTMENTS

Housing: Solara

Small Business: Market Creek Plaza



Charter Schools: KIPP



HEALTH SOLUTIONS HAPPEN IN NEIGHBORHOODS



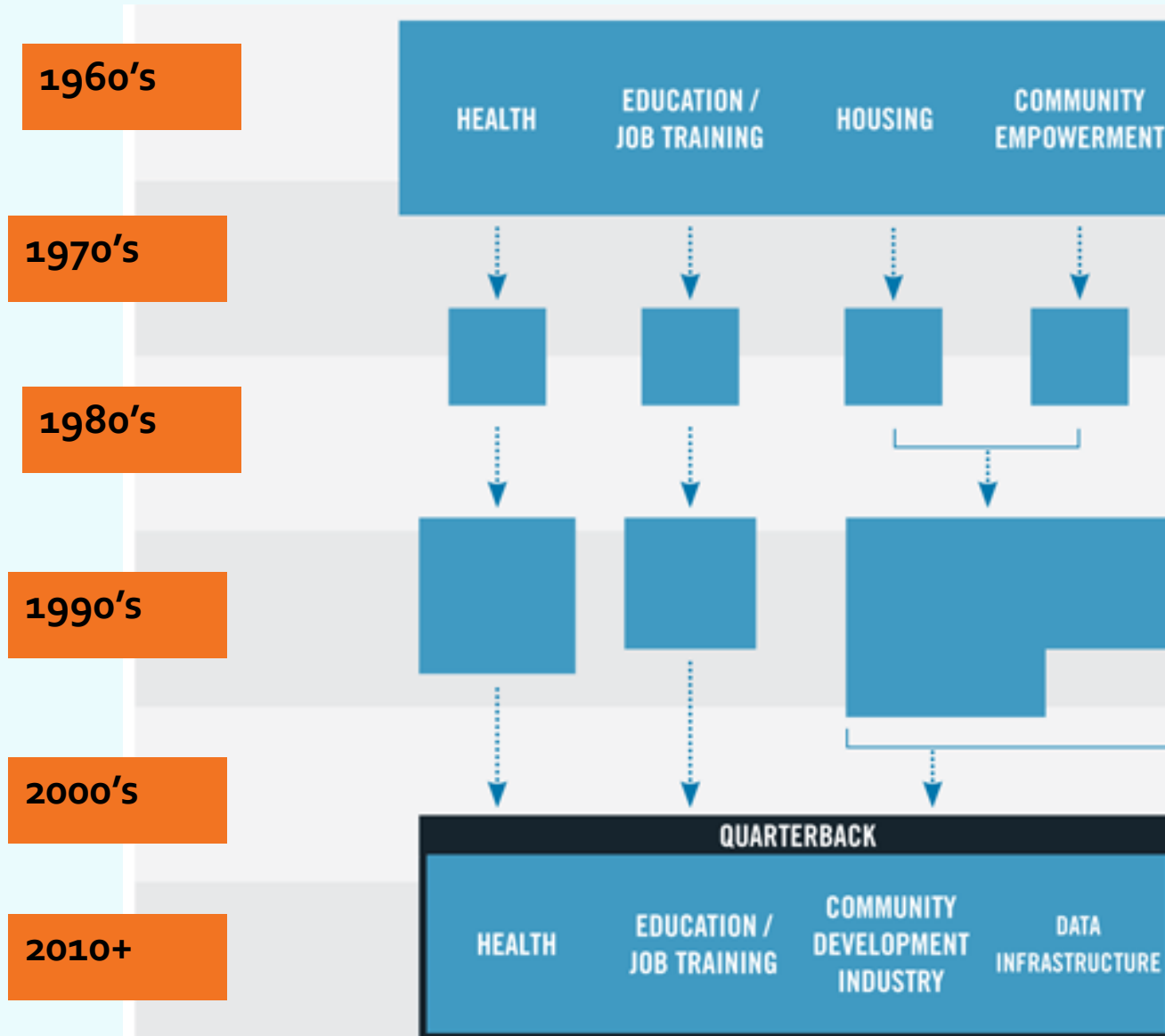
**WE ARE MAKING
PROGRESS**

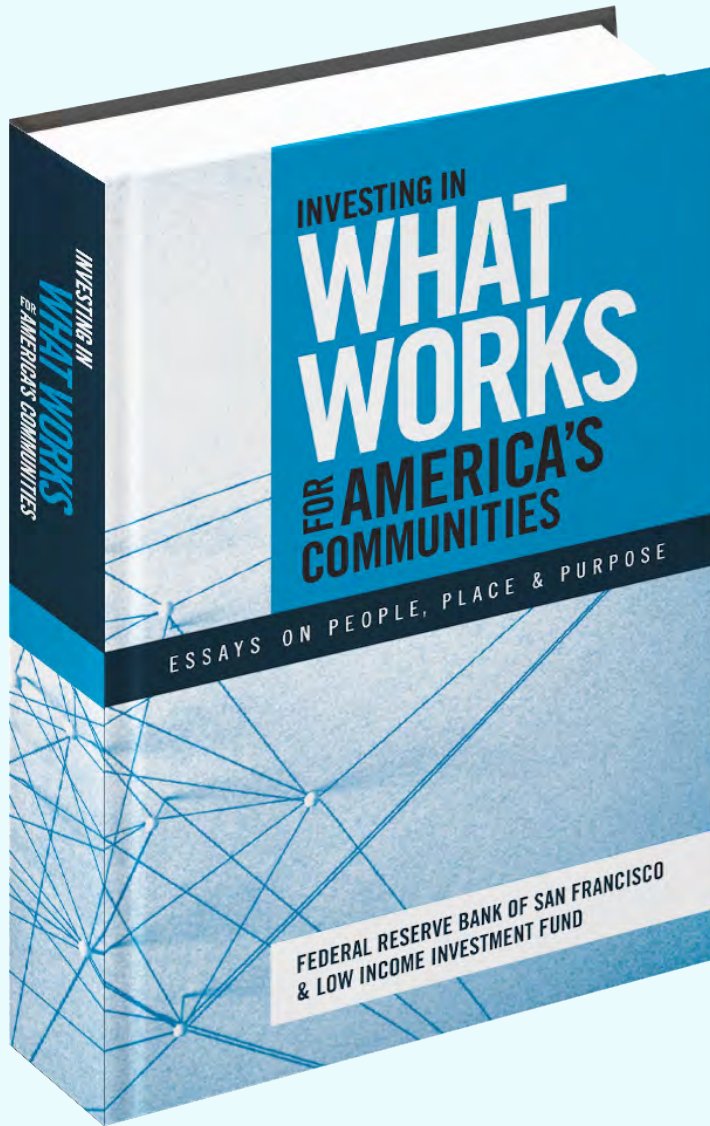
COMMUNITY DEVELOPMENT ATTACKS

THE CORROSIVE EFFECTS OF POVERTY



HISTORY OF COMMUNITY DEVELOPMENT



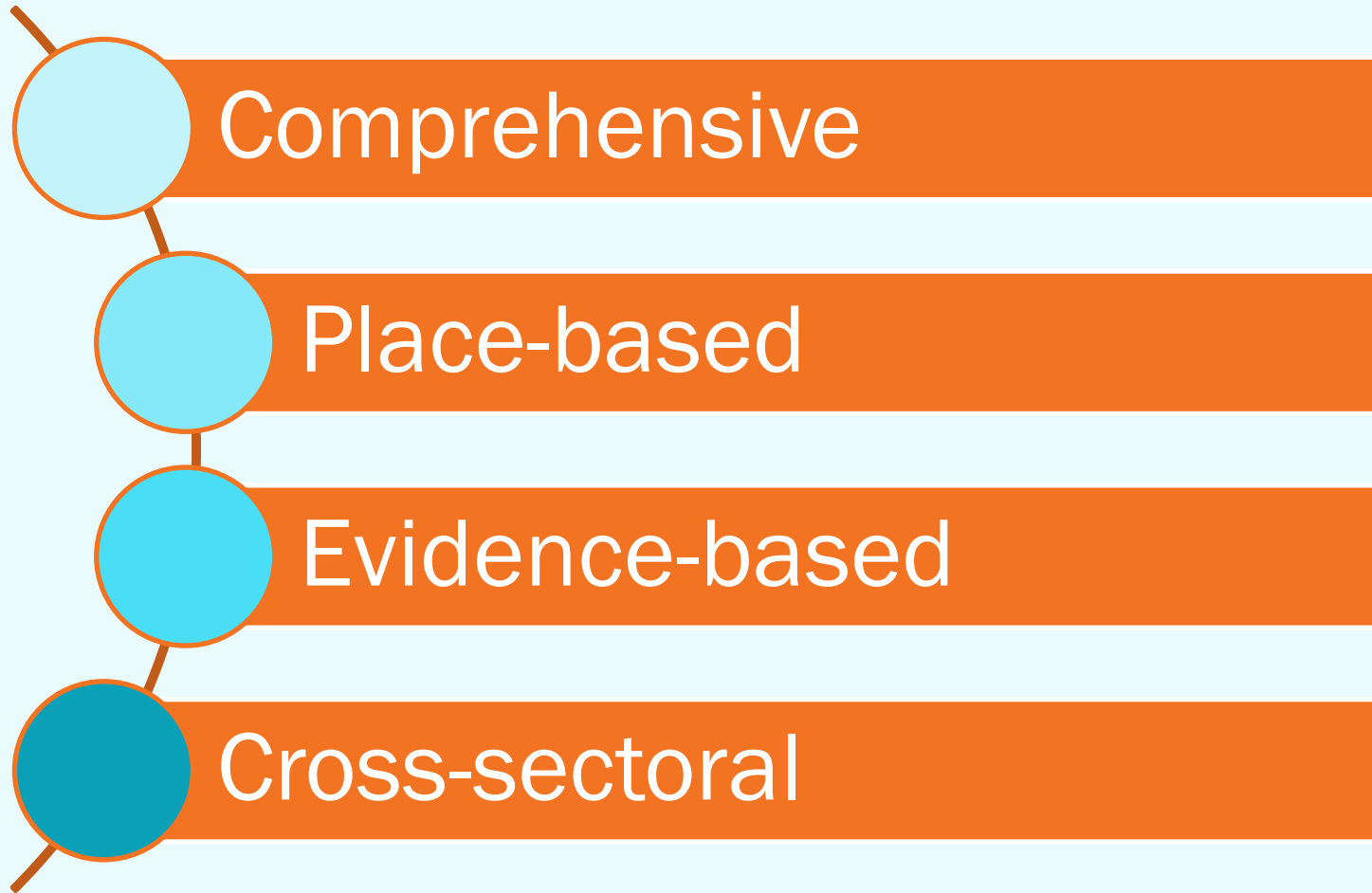


“We are likely to look back at this time and wonder why community development and health were ever separate industries.”

RISA LAVIZZO-MOUREY
PRESIDENT AND CEO, ROBERT
WOOD JOHNSON FOUNDATION

WHATWORKSFORAMERICA.ORG

STATE OF THE ART



THE COMMUNITY QUARTERBACK



CASA DE MARYLAND



PROGRESS TOWARD COLLABORATION

RWJF Commission
to Build a Healthier America

 OPPORTUNITY
FINANCE NETWORK

HealthAffairs

PEDIATRICS[®]
OFFICIAL JOURNAL OF THE AMERICAN ACADEMY OF PEDIATRICS

HICCUP  The Way to
Wellville 
five places. five metrics. five years.

SOCAP  HEALTH

June 25+26, 2014 The New York Academy of Medicine - New York, NY

CREATING THE MARKET THAT VALUES HEALTH



COMMUNITY
DEVELOPMENT
INVESTMENT
REVIEW

 PARTNERS
IN PROGRESS

SUCCESS
MEASURES[®]

 NeighborWorks[®]
AMERICA

 HOW HOUSING MATTERS

PROGRESS TOWARD COLLABORATION

- **NEW FUNDS CREATED**

- **Healthy Futures Fund**
- **Healthy Neighborhoods Equity Fund**



- **EXPANDING SOCIAL IMPACT BONDS**

- **Early Childhood:** South Carolina, Orange County, New York State, San Francisco
- **Diabetes:** New York State
- **Asthma:** Fresno and Alameda County, California
- **Special Education:** Salt Lake City, Utah



Build Healthy Places Network

SCOPE OF THE PROBLEM

THE PROBLEM IS ENORMOUS

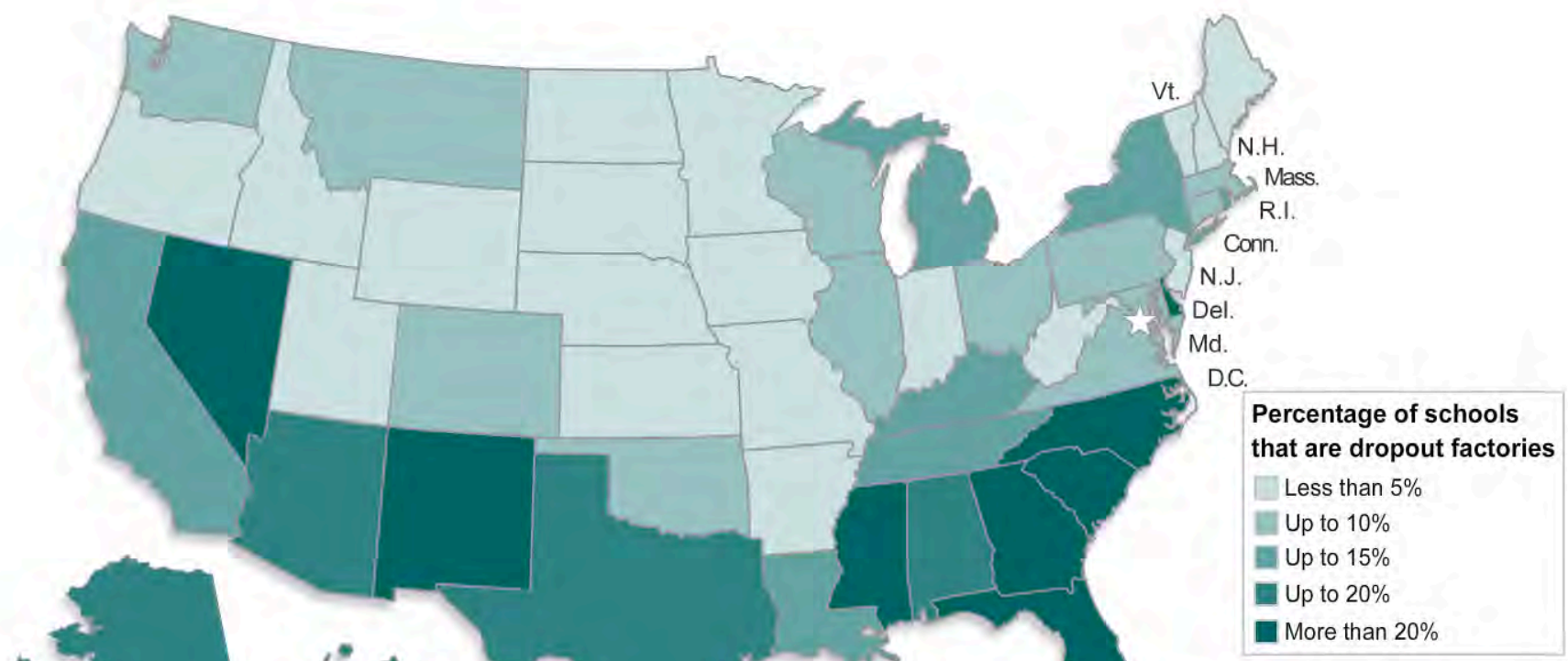
3,570 Census tracts have poor populations above 40%

20.4 million Americans live in deep poverty

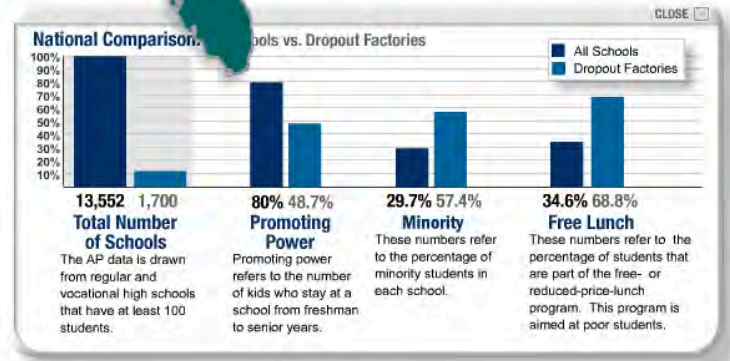
80% OF COUNTIES IN AMERICA HAVE FALLEN BEHIND THE LIFE EXPECTANCY AVERAGE OF THE WORLD'S TOP 10 COUNTRIES

1,700 American high schools have dropout rates above 40%

ENTIRE STATES HAVE BECOME DROP OUT FACTORIES



NOTE: The AP data is drawn from 13,552 regular and vocational high schools with at least 100 students with an entering freshman and a senior class, and promoting power data for 2004, 2005, and 2006. Some alternative schools that are not designed to graduate students but offer them short-term placement may have been miscoded and included in this federal database. Promoting power refers to the retention rate of students from freshman to senior year. The researchers note that there may be local explanations or reasons why some of these schools' promoting power may differ from state-reported graduation rates.



SOLUTION SCALE



PROBLEM SCOPE

1 CASA de Maryland

1 ReFresh Project

1 Neighborhood Centers, Inc

10 Purpose Built Communities

How are these individual efforts going to solve such a big, big problem?

WE NEED

SYSTEMS CHANGE

The future is here. It's
just unevenly
distributed....

-William Gibson



WE HAVE THE BUILDING BLOCKS

IDEAS

PARTNERS

MONEY

CAPACITY

CREATIVITY

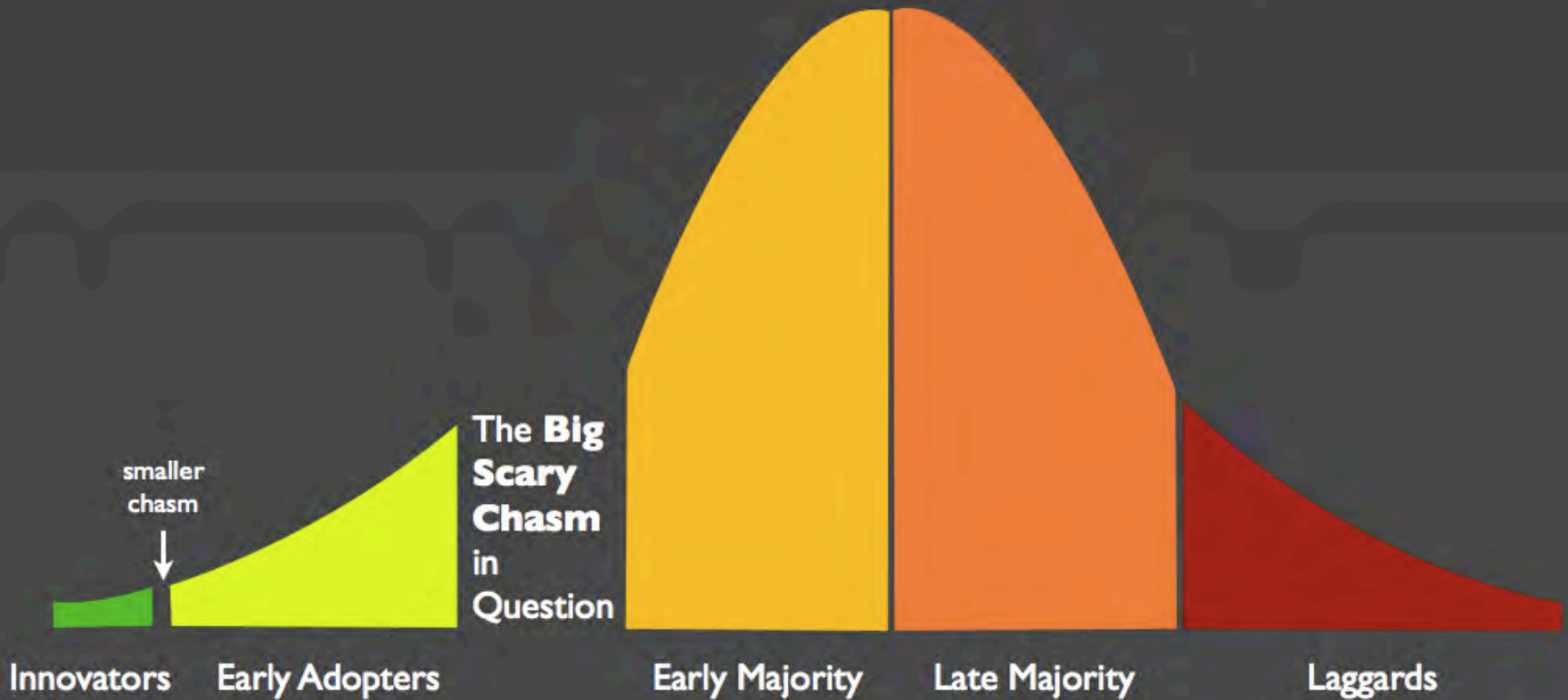
SHARED
VALUES

WHO ARE THE PARTNERS?

- Banks
- Community Development Financial Institutions
- Public health departments
- State and local government
- Hospitals and Community Clinics/FQHCs
- Foundations
- Public Safety
- Legal professionals
- Insurance companies
- Religious organizations
- High net worth investors
- Social entrepreneurs
- Community activists

Crossing the Chasm

Geoffrey Moore - 1991



**WHAT SYSTEMS NEED TO
CHANGE TO CREATE A
WELCOMING ENVIRONMENT
FOR THE JUMP?**

**HOW DO WE BUILD AN
ECOSYSTEM THAT
FOSTERS HEALTHY
COMMUNITIES?**

A hand holding a pink pencil points to a line graph on a document. Below the line graph is a bar chart with blue bars. The background includes a white keyboard with a division key and a plus sign. The text is overlaid on a white rectangular box.

DATA:
**WE ALL NEED
TO USE THE
SAME
COMPASS**

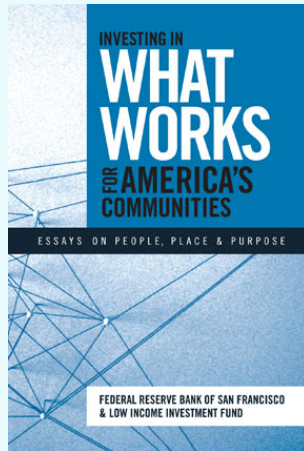


**POLICY:
BREAK DOWN
SILOS AND
ROW IN THE
SAME
DIRECTION**

**FINANCE:
CREATE A
MARKET
THAT VALUES
HEALTH**



RESOURCES



Investing in What Works for America's Communities

whatworksforamerica.org



Build Healthy Places Network

Build Healthy Places Network

buildhealthyplaces.org



Partners in Progress

partnersinprogress.org