



Build Healthy
Places Network



COMMUNITY DEVELOPMENT AS A PARTNER FOR HEALTH EQUITY

Renee Roy Elias, PhD
*Manager of Strategic
Programs & Research*

Daniel Lau, MPH
*Manager of Strategic
Engagement*

May 18, 2016, National Association of County & City Health Officials



PRESENTATION OUTLINE

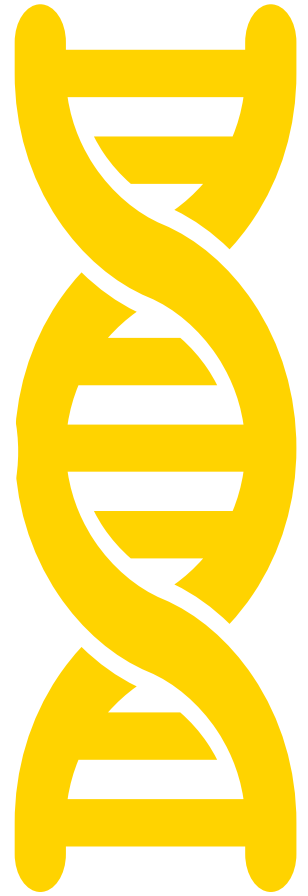
1. Health Happens in Neighborhoods
2. What is Community Development?
3. Community Development's Scope and Scale
4. Momentum for Cross-Sector Collaboration
5. The Network as the Connector



**HEALTH HAPPENS
IN NEIGHBORHOODS**

**IN DETERMINING
YOUR HEALTH...**

94102 >



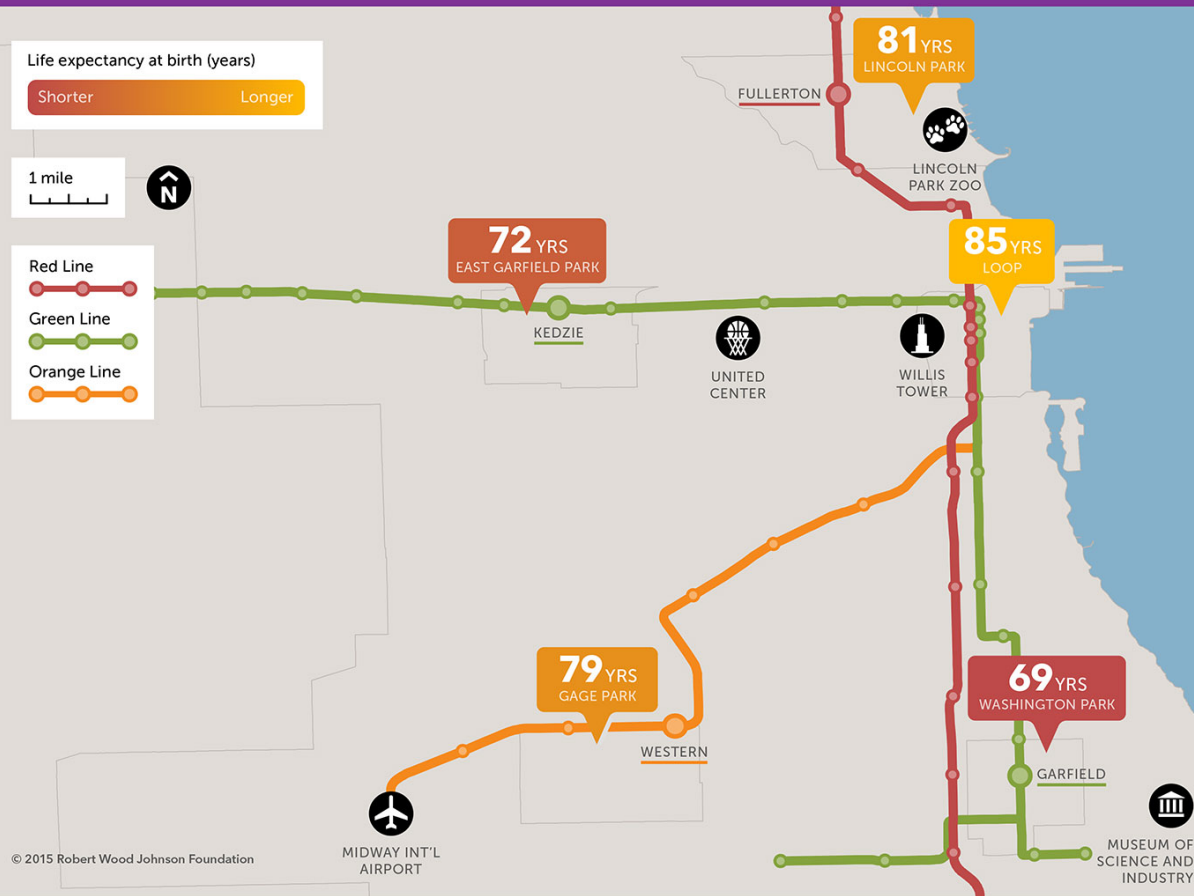
HEALTH HAPPENS IN NEIGHBORHOODS

CHICAGO, ILLINOIS

Short Distances to Large Gaps in Health

Follow the discussion

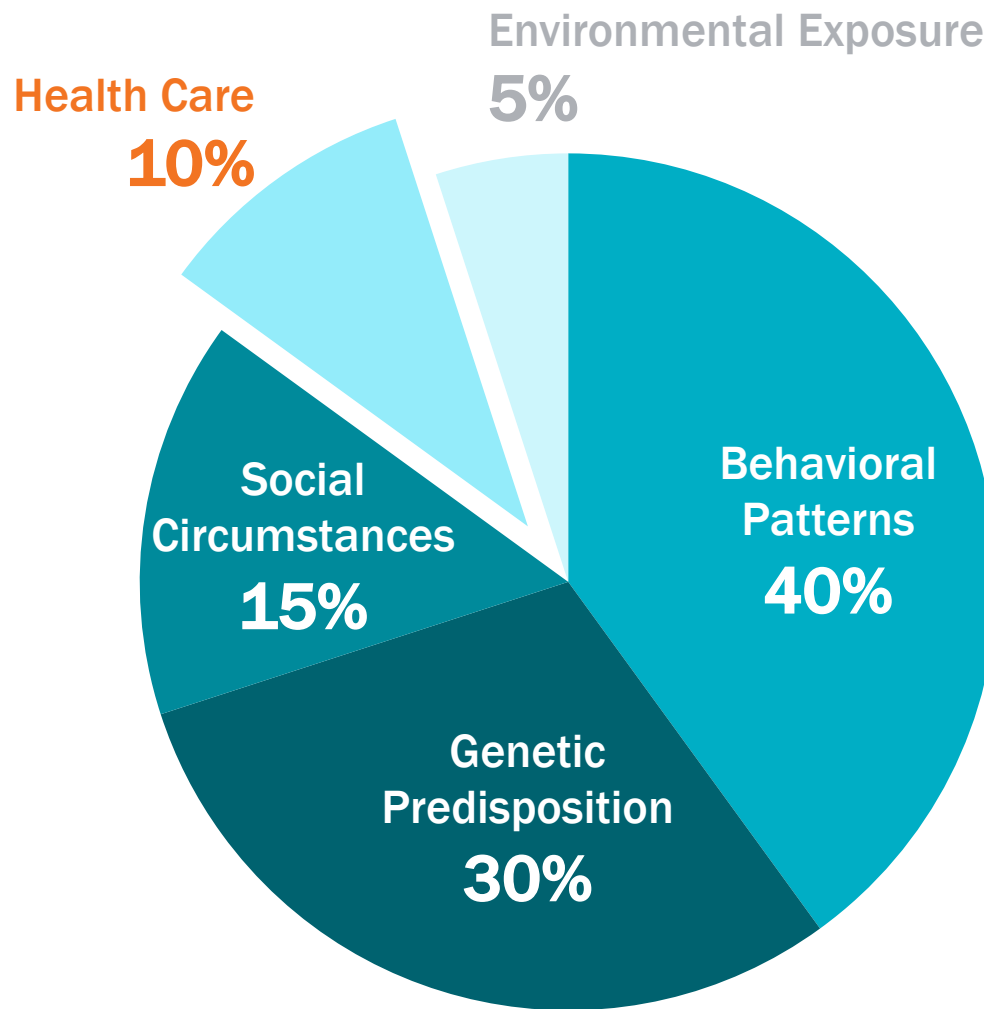
#CloseHealthGaps



In Chicago, for example, babies born just a few train stops apart can have a **16-year difference** in life expectancy.

Source: Robert Wood Johnson Foundation. "Maps to #CloseHealthGaps

HEALTH CARE ≠ HEALTH



Source: McGinnis, J. et al. (2002). "The Case For More Active Policy Attention To Health Promotion." *Health Affairs* 21, no. 2 (March 1, 2002): 78–93

THE SCALE OF HEALTH INVESTMENTS

\$3.2 trillion

in health care expenditures in 2015

Less than **3%** of this amount (**\$75.4 billion**)
was invested in public health in 2013

HEALTHY COMMUNITIES INITIATIVE



- 24 meetings to date



Robert Wood Johnson Foundation



RWJF COMMISSION TO BUILD A HEALTHIER AMERICA

RWJF Commission
to Build a Healthier America



Click on Tools to convert files
to PDF.

*Fundamentally change how
we revitalize neighborhoods,
fully integrating health into
community development.*

- Robert Wood Johnson Foundation Commission to Build a
Healthier America Report, 2014

Time to Act: Investing in the Health
of Our Children and Communities

Recommendations From the Robert Wood Johnson Foundation
Commission to Build a Healthier America



Robert Wood Johnson Foundation



WHAT IS COMMUNITY DEVELOPMENT?

COMMUNITY DEVELOPMENT IS IN THE NEIGHBORHOOD IMPROVEMENT BUSINESS



Baker Ripley Neighborhood Center, Houston TX

COMMUNITY DEVELOPMENT IS A SECTOR

- AFFORDABLE HOUSING DEVELOPERS
- NEIGHBORHOOD PLANNERS

COMMUNITY
DEVELOPMENT
CORPORATIONS
(CDCs)

COMMUNITY
DEVELOPMENT
FINANCIAL
INSTITUTIONS (CDFIs)

- FOUNDATIONS
- PRIVATE BANKS
- IMPACT INVESTORS

DEVELOPMENT

FINANCING

AFFORDABLE
HOUSING

BUSINESSES

JOB TRAINING

HEALTH
CLINICS

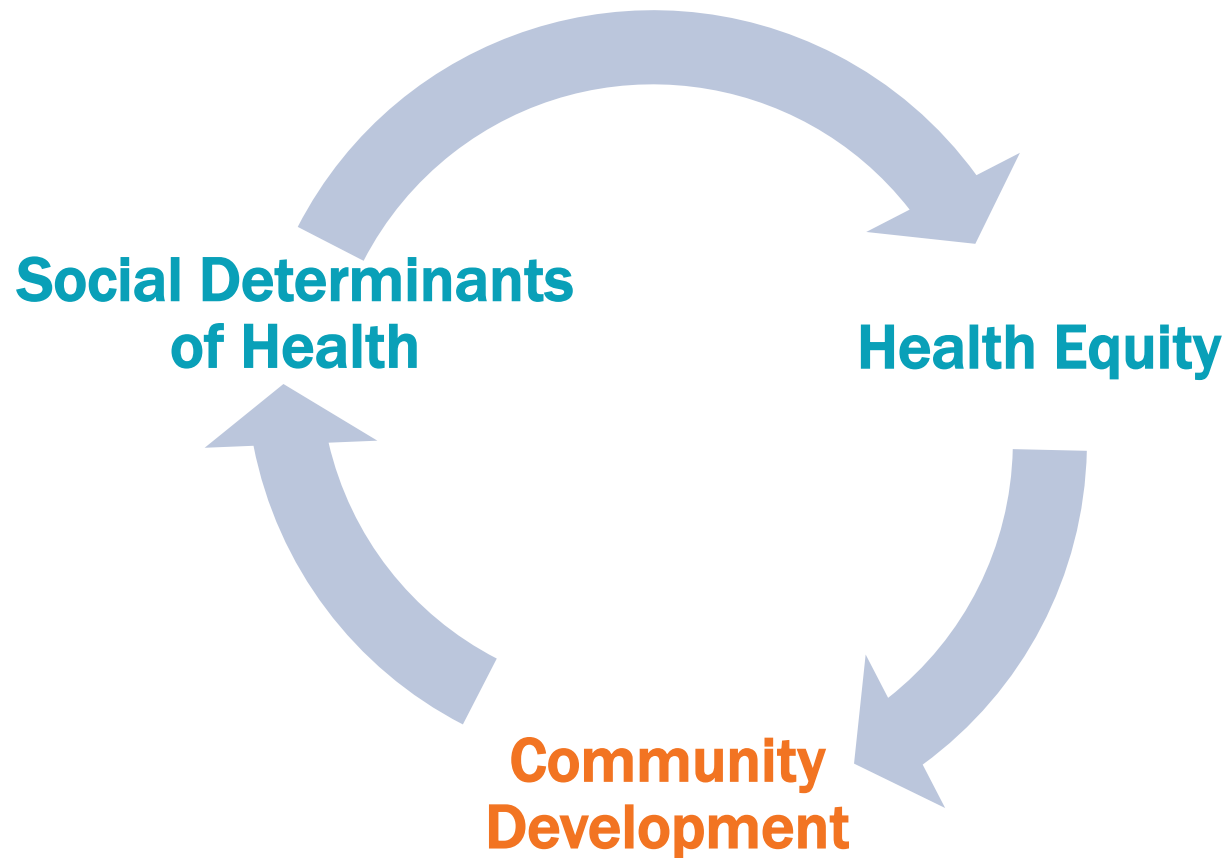
COMMUNITY
BUILDING
PROGRAMS

SOCIAL
SERVICES

COMMUNITY
CENTERS

CHARTER
SCHOOLS

COMMUNITY DEVELOPMENT: AN ACTION ARM FOR HEALTH EQUITY



See The Network's Jargon Buster and
blog posts on [the community development sector](#)
and [its connections to health](#).



EAST LAKE MEADOWS ATLANTA, GEORGIA



VILLAGES OF EAST LAKE ATLANTA, GEORGIA



PURPOSE
BUILT
COMMUNITIES

See the Network's [Community Close Up case study on East Lake](#)



VILLAGES OF EAST LAKE ATLANTA, GEORGIA



PURPOSE
BUILT
COMMUNITIES



MODEL FOR NEIGHBORHOOD TRANSFORMATION

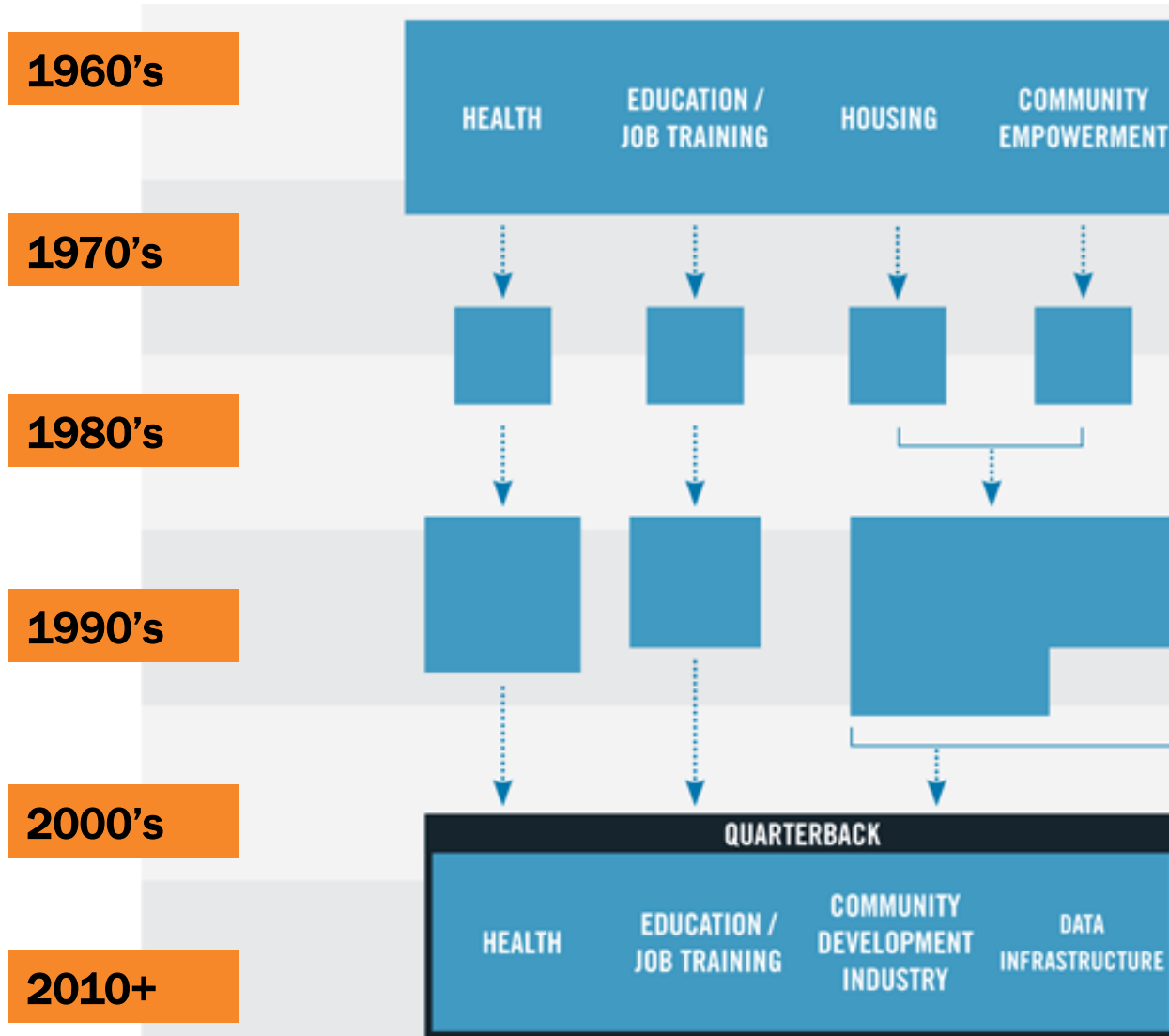


COMMUNITY DEVELOPMENT'S SCOPE AND SCALE

COMMUNITY DEVELOPMENT PAST: URBAN RENEWAL



COMMUNITY DEVELOPMENT OVER THE DECADES



Source: [*Investing in What Works For America's Communities*](#)

COMMUNITY DEVELOPMENT CORPORATIONS & AFFILIATES



46,000

of CDCs nationwide (2006)



75,000

Jobs created by CDC activities (2010)



COMMUNITY DEVELOPMENT FINANCIAL INSTITUTIONS



958

government-certified CDFIs (2015)



1.56 Million

Square feet of healthy food retail
financed (2015)



OPPORTUNITYFINANCE
NETWORK

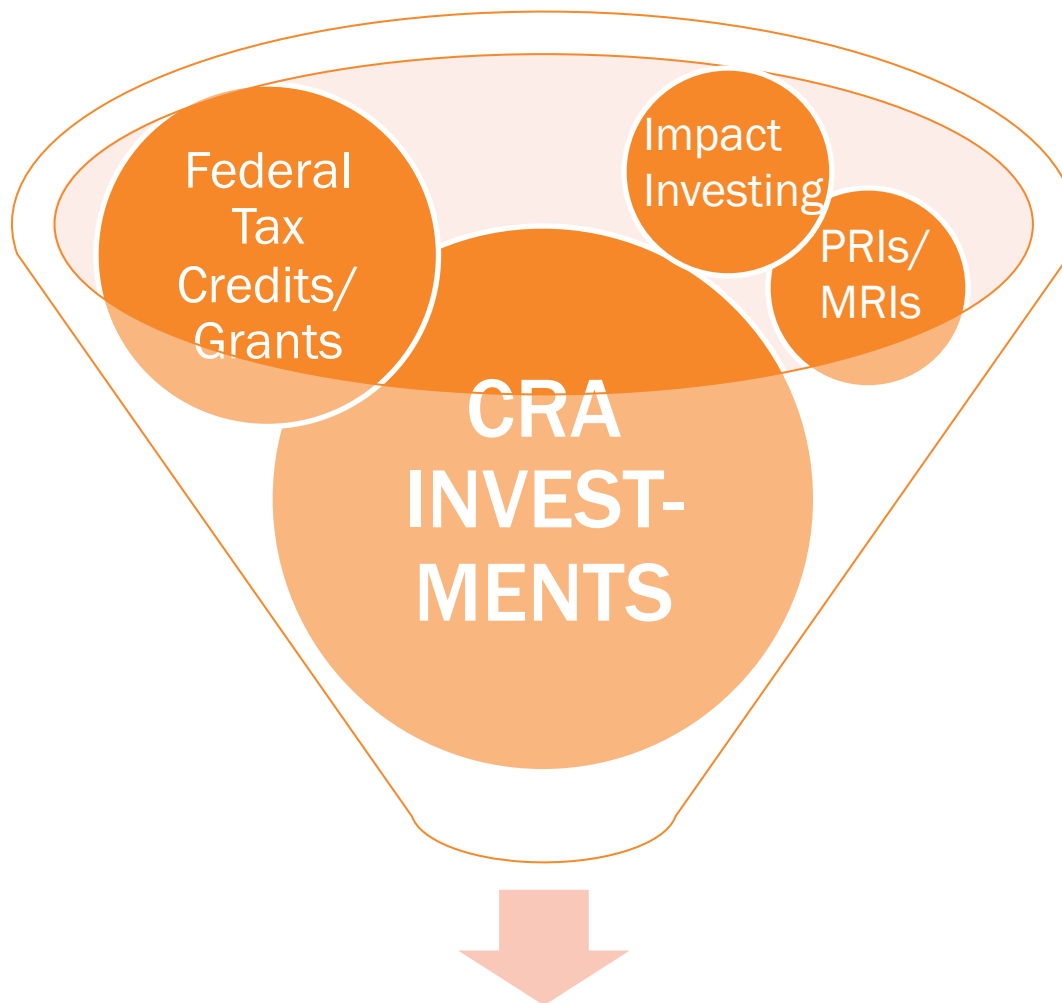


LISC
*Building Sustainable
Communities*

 **Enterprise**[™]

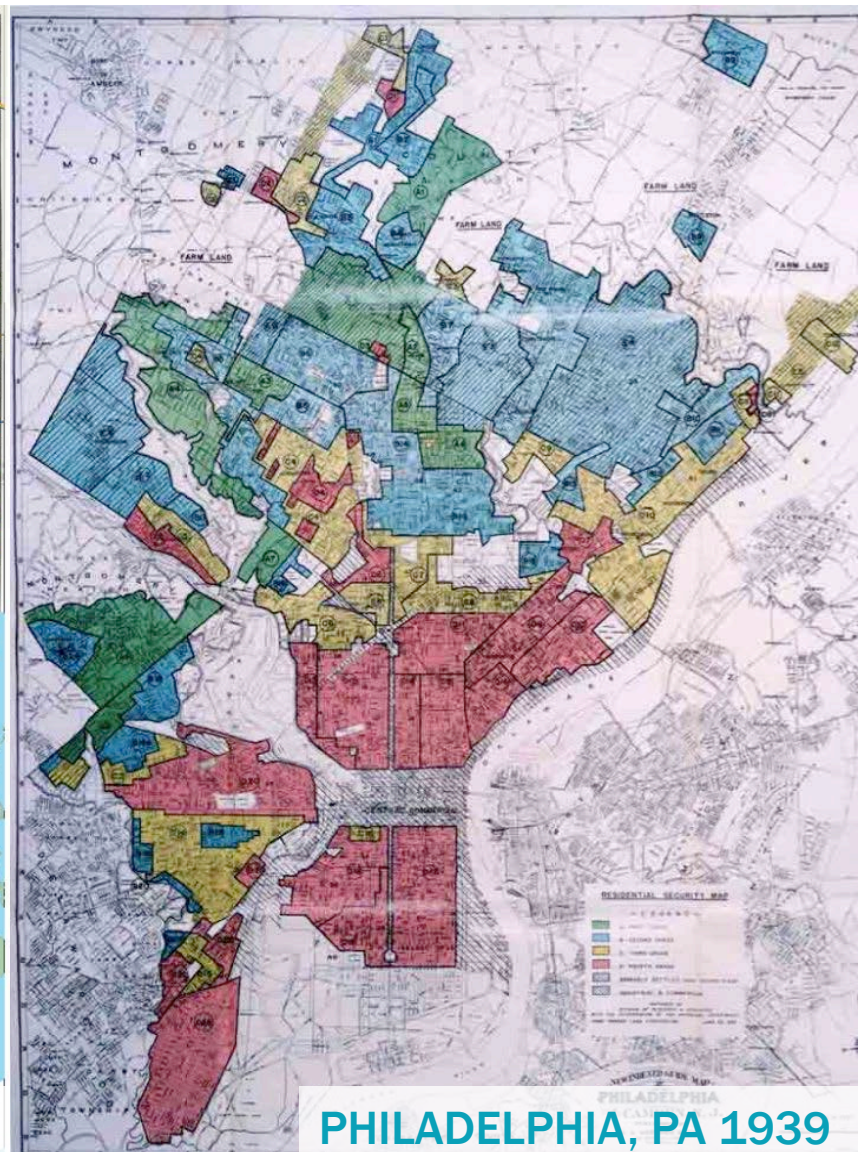
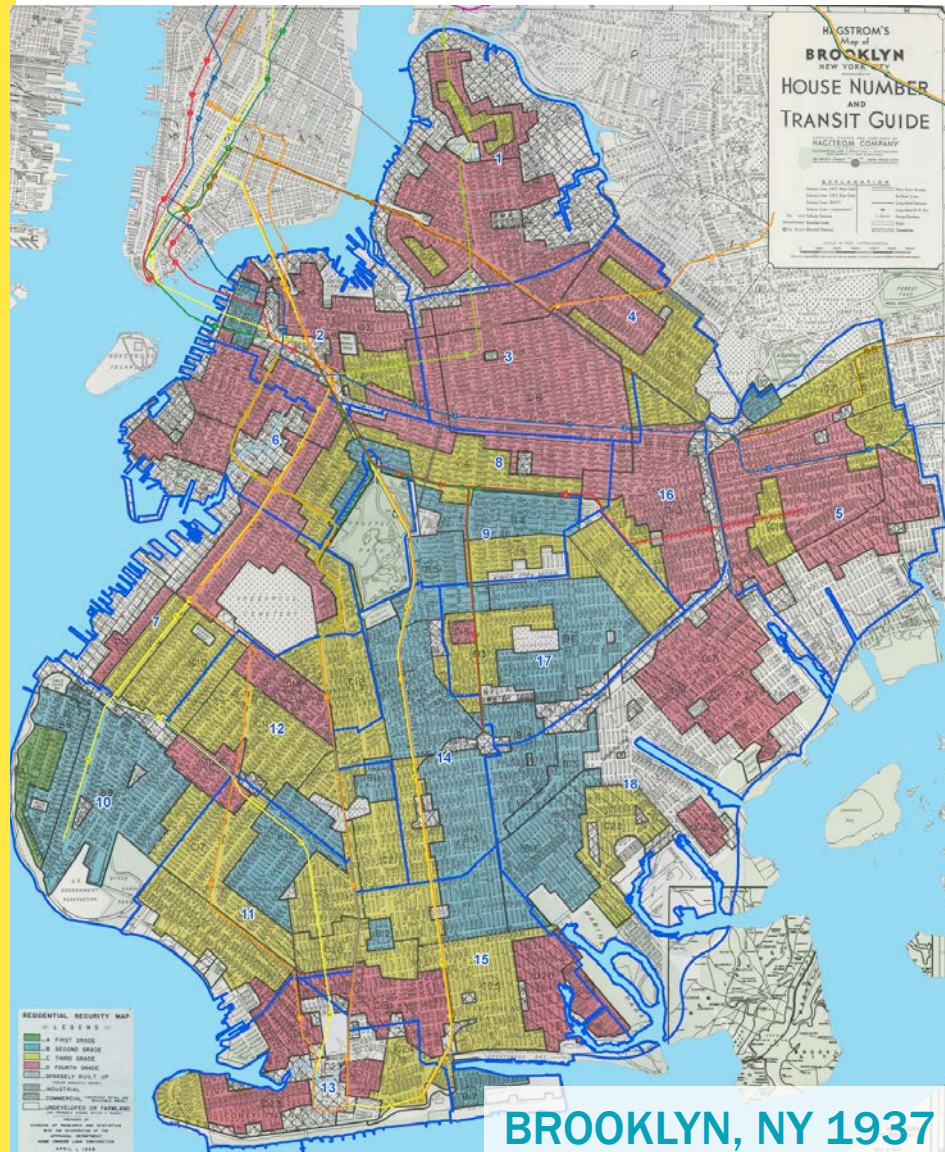
HOW MUCH?

WHERE DOES THE MONEY COME FROM?



\$200 Billion Annually

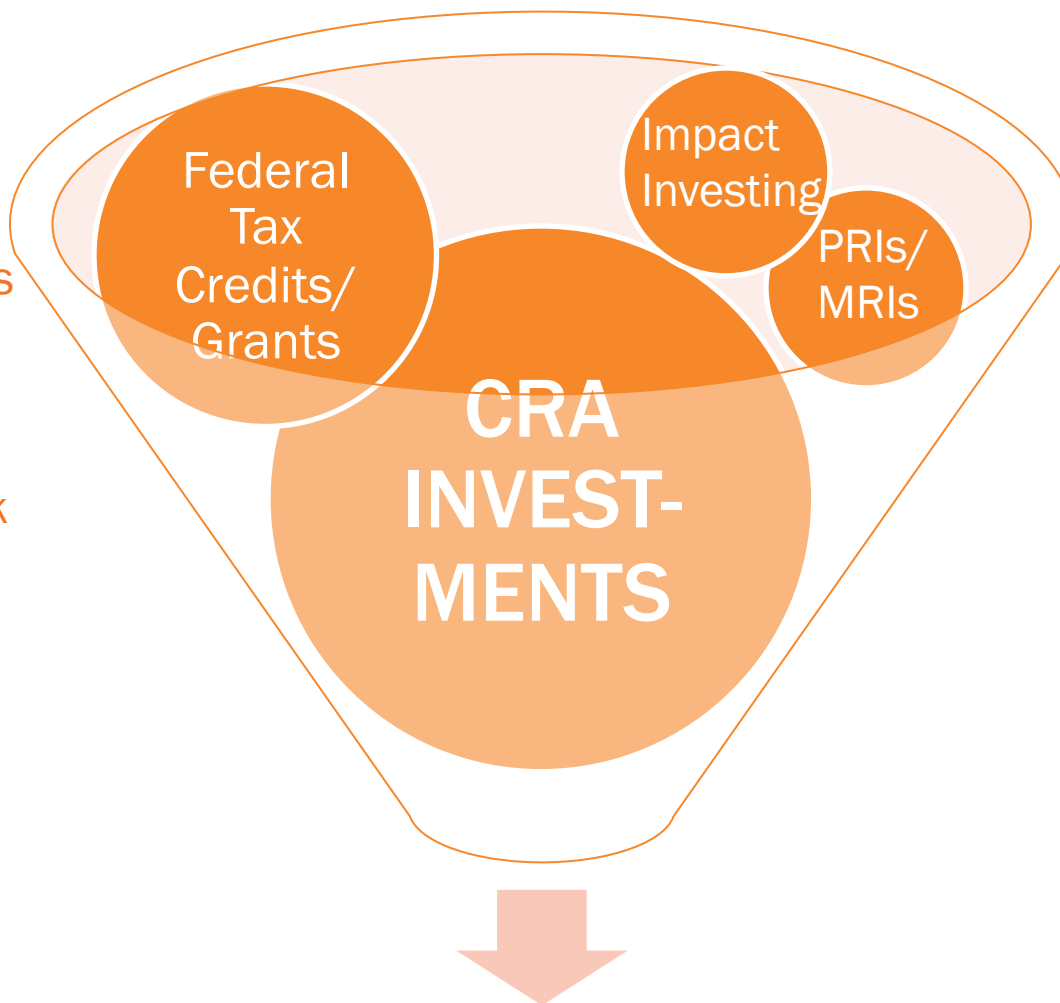
ENSURING EQUITABLE INVESTMENTS: COMMUNITY REINVESTMENT ACT OF 1977



HOW MUCH?

WHERE DOES THE MONEY COME FROM?

- Low-Income Housing Tax Credits
- New Markets Tax Credits
- Community Development Block Grants
- CDFI Loan Funds

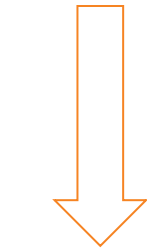


\$200 Billion Annually

COMMUNITY DEVELOPMENT IS IN THE LEVERAGING BUSINESS

\$15 MILLION RAISED IN
CAPITAL CAMPAIGN

\$15 MILLION INVESTED
IN AFFORDABLE
HOUSING



\$15 MILLION
AFFORDABLE
HOUSING

\$15 MILLION RAISED IN
CAPITAL CAMPAIGN

\$5 MILLION INVESTED
IN AFFORDABLE
HOUSING

\$15 MILLION
LEVERAGED FROM
CDFIS AND BANKS



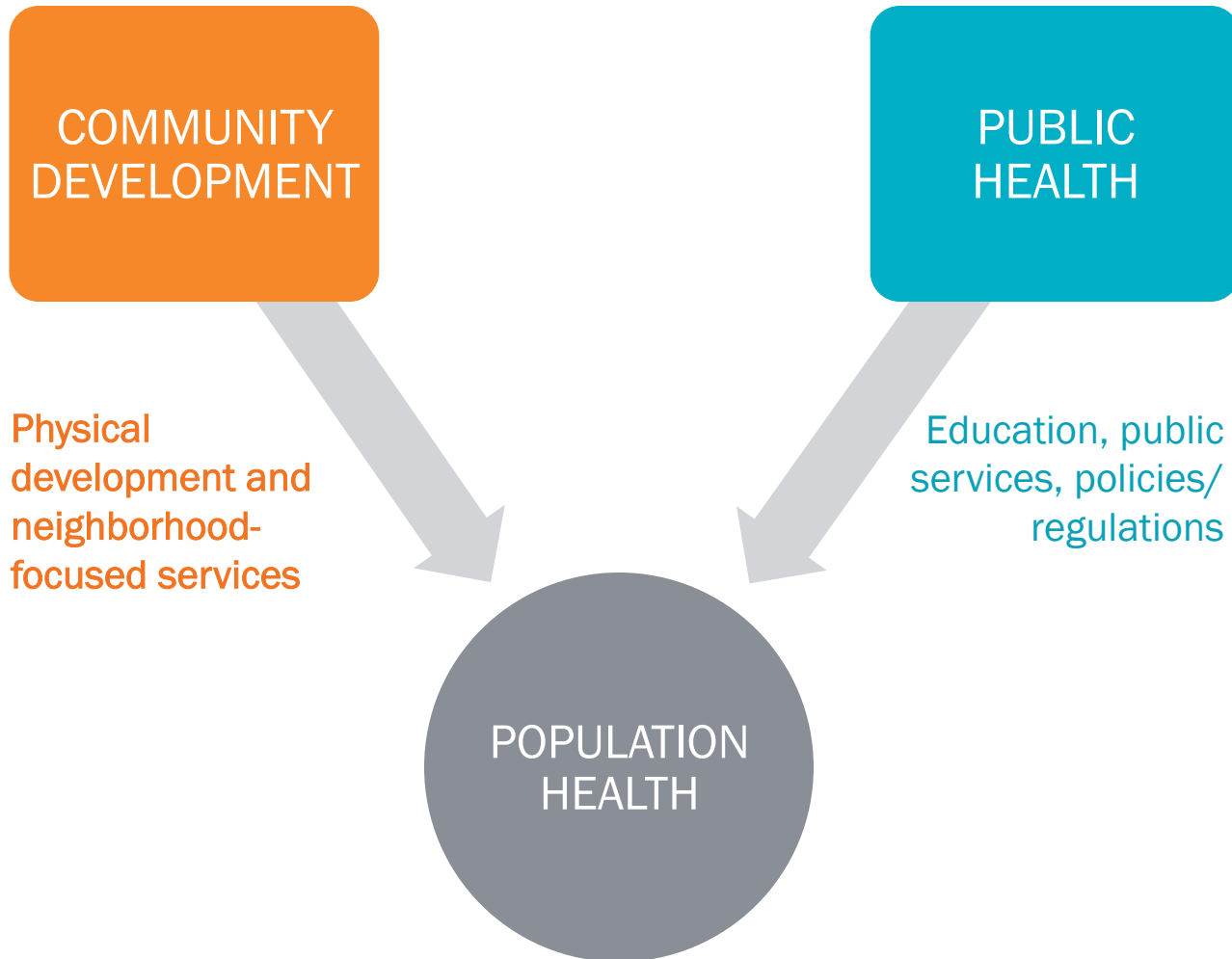
\$20 MILLION
AFFORDABLE
HOUSING



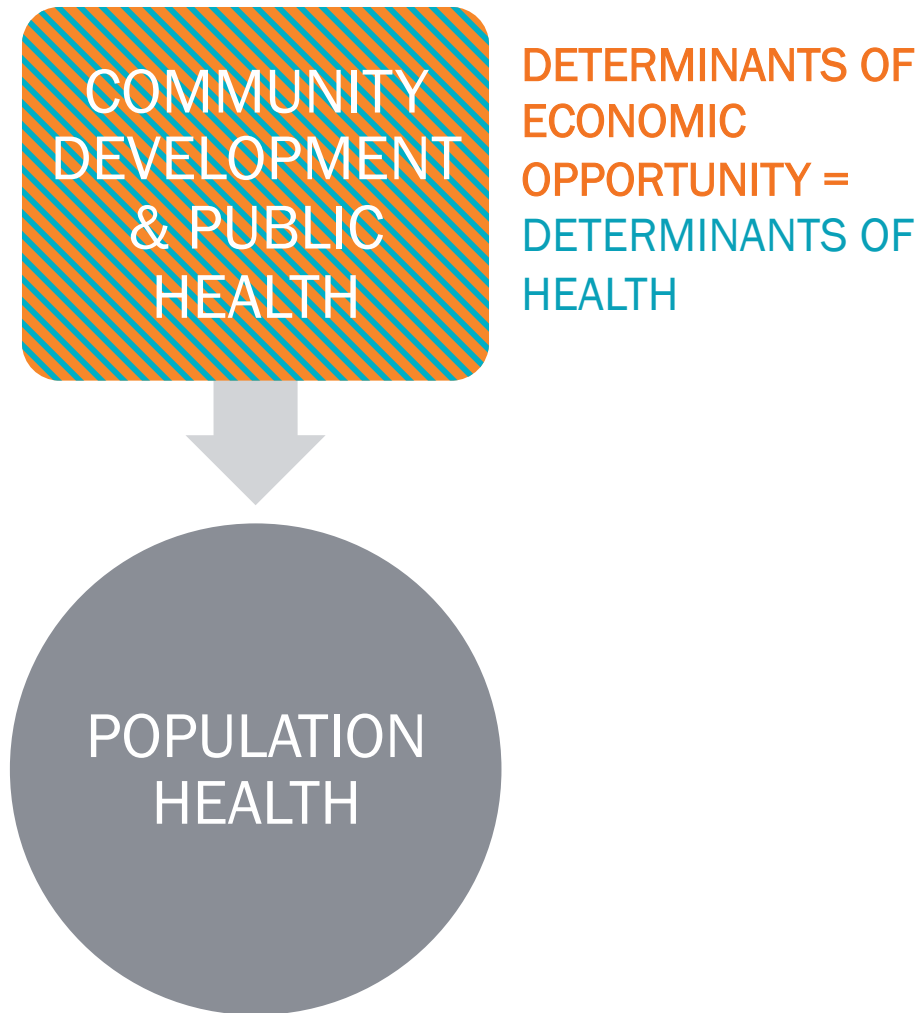
\$10 MILLION
EARLY CHILDHOOD
CENTER

MOMENTUM FOR CROSS-SECTOR COLLABORATION

SHARED AIMS BUT DIFFERENT PATHS



SHARED AIMS BUT DIFFERENT PATHS



WHAT WE'VE LEARNED ABOUT BOTH SECTOR'S ASSETS

PUBLIC HEALTH

- Data/research capabilities
- Expertise in social determinants of health/health
- Policy expertise/connections to government

COMMUNITY DEVELOPMENT

- Community engagement/deep connection to neighborhoods
- Technical expertise in land use, real estate, etc.
- Financial resources

GROWING MOMENTUM: APHA POLICY STATEMENT



AMERICAN PUBLIC HEALTH ASSOCIATION

For science. For action. For health.

[About APHA](#) | [Join](#) | [Renew](#) | [Annual Meeting](#) | [Careers](#) | [Contact Us](#) | [Store](#)

Search APHA.org



LOGIN

What is
Public Health?

Topics &
Issues

Policy &
Advocacy

Publications &
Periodicals

Professional
Development

Events &
Meetings

News &
Media

APHA
Communities

Become a
Member

[APHA](#) > [Policy Statements and Advocacy](#) > [Policy Statements](#) > [Policy Statement Database](#) > [Leveraging Community Development to Improve Health](#)

 [Print](#)



Opportunities for Health Collaboration: Leveraging Community Development Investments to Improve Health in Low-Income Neighborhoods

[< Policy Statements
and Advocacy](#)

[< Policy Statements](#)

[Policy Statements](#)

[Policy Statement
Database](#)

[Policy Statement
Development Process](#)

Abstract

Evidence for the role of place in health outcomes has been growing. Significant disparities in health outcomes between neighborhoods reflect place-based inequities in the physical, social, and economic assets needed by residents to live productive and healthy lives. The community development industry is a multibillion-dollar sector of the economy investing in low-income neighborhoods, yet to date there has been limited collaboration between the health and community development sectors. With 77 million people in the United States living in high-poverty neighborhoods, there is an ethical imperative to advance such collaboration. Integration of these sectors is needed to ensure that (1) significant public and private investments in neighborhood revitalization maximize opportunities for health improvement, (2) health expertise informs the development of tools and techniques to guide health-related project decision-making and measure health outcomes, and (3) the increasing efforts of the health care sector to address prevention and population health, in light of the Patient Protection and Affordable Care Act, are coordinated and leveraged with community development sector investments. Innovative cross-sector collaborations by the community development sector show promise in mitigating place-based disadvantage and improving the social determinants of health.

Read more at: www.apha.org

GROWING MOMENTUM: APHA POLICY STATEMENT



Calls upon public health agencies to solicit input and involvement from the community development sector and collaborate on research, implementation and measurement.

GROWING MOMENTUM: RWJF ANNUAL MESSAGE



As part of this Annual Message we are issuing a challenge to individuals and organizations across America *to forge new and unconventional partnerships with the goal of building a Culture of Health that benefits all.*

– Risa Lavizzo-Mourey, MD, MBA,
President/CEO, Robert Wood
Johnson Foundation

2016 PRESIDENT'S MESSAGE

Joining Forces to Build Momentum

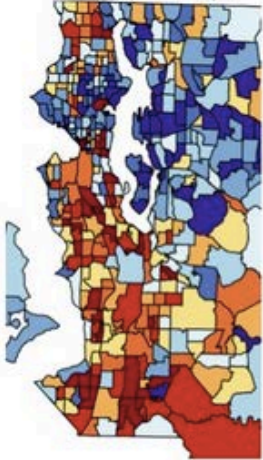
Risa Lavizzo-Mourey, MD, MBA
President and Chief Executive Officer

Read more at www.rwjf.org

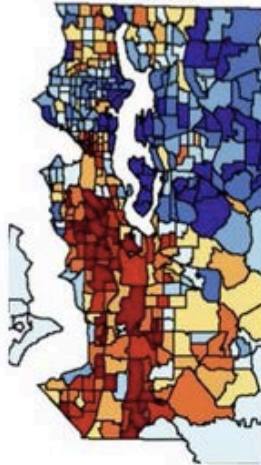
GROWING MOMENTUM: SEATTLE/KING COUNTY

KING COUNTY HEALTH AND WELL-BEING MEASURES

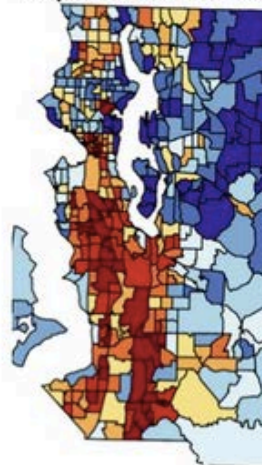
Life Expectancy



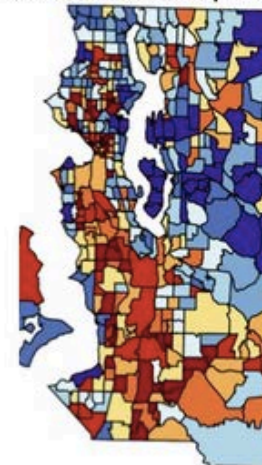
Tobacco Use



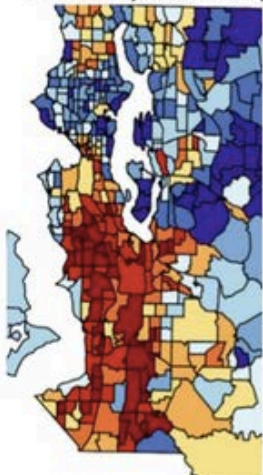
Frequent Mental Distress



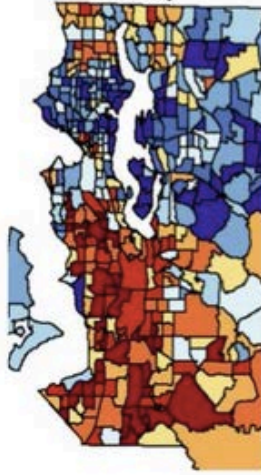
Adverse Childhood Experiences



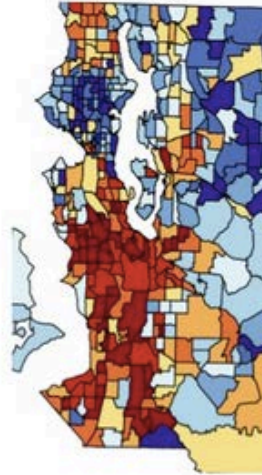
Lack of Physical Activity



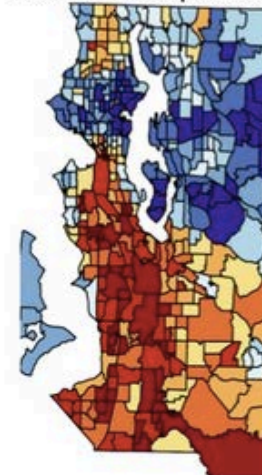
Obesity



Diabetes



Preventable Hospitalization



Read more about Communities of Opportunity in: [*What Counts: Harnessing Data for America's Communities*](#)

GROWING MOMENTUM: HIAs INFORMING COMM DEVT

GEORGIA HEALTH POLICY CENTER



A HEALTH IMPACT ASSESSMENT OF THE 2015 QUALIFIED ALLOCATION PLAN FOR LOW-INCOME HOUSING TAX CREDITS IN GEORGIA

SUMMARY BRIEF
SEPTEMBER 2015



HEALTHY NEIGHBORHOODS EQUITY FUND I LP



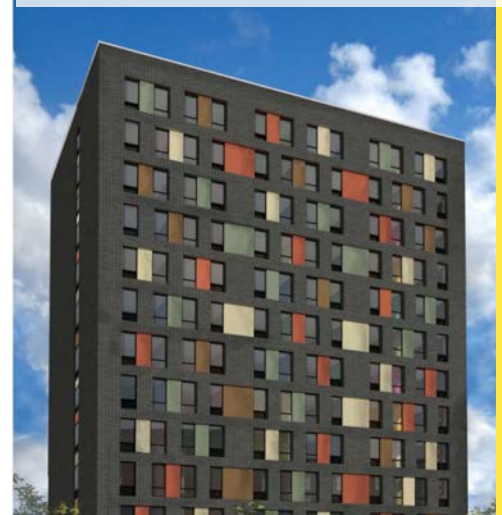
Read more at the [Georgia Health Policy Center's website](#) and the [Healthy Neighborhood Equity Fund's website](#).

NEW INCENTIVES

- **Public Health Accreditation**
- **Affordable Care Act & (CHNA)
Community Health Needs
Assessments**
- **Affordable Care Act &
Medicaid**



Completed, Creston
Ave, Bronx, NY



Underway, Boston Rd,
Bronx, NY

THE NETWORK AS THE CONNECTOR



Build Healthy
Places Network



MISSION:

To catalyze and support collaboration across the health and community development sectors, together working to improve low-income communities and the lives of people living in them.



Build Healthy
Places Network



PROGRAM OF



SUPPORTED BY



Robert Wood Johnson Foundation

BUILDS UPON





Build Healthy
Places Network

CONNECTS LEADERS

BUILDS THE KNOWLEDGE BASE FOR COLLABORATION

CURATES RESOURCES AND EXAMPLES OF WHAT WORKS

BUILDHEALTHYPLACES.ORG

By joining forces, community
developers and health professionals
can have a more powerful impact.

[Learn More About the Network](#)



Build Healthy
Places Network
[#NetworkCommons](#)



[#NetworkCommons](#) | [Community Close Up](#) | [Crosswalk Magazine](#) | [Dispatches](#) | [Events](#) |
[Expert Insights](#) | [Fast Facts](#) | [Making the Case](#) | [The Network's Picks](#)

The Pulse



A monthly roundup of what we're
reading and where we've been at
the Intersection of community
development and health.

[View Past Issues](#)

[Sign Up](#)

APRIL
There's a SIB for
that

MARCH
Place matters to
children's health

FEBRUARY
Tackling the social
inequities that
shape health



TOOLS FOR COLLABORATION: MEASUREUP

MeasureUp

Welcome to MeasureUp, a microsite of resources and tools to help you measure and describe your programs' impact on families and communities and on factors related to health. MeasureUp provides examples, tools, and resources to help you make your case, without having to become an economist.

You can [dip your toe into the topic](#) or [dive deep](#). You can learn about [how to map](#) issues in your community or see how other groups are measuring impact and [the tools](#) they use. [Read stories](#) about communities that have used health metrics in community development work. And if you want to [design your own study](#), you can do that too. If you need to make your case to a funder or policymaker, [read about the evidence](#) for a link between health and community.

Here's what's available:



Mapping Tools

Learn how to map your community's strengths and target areas.



Measurement Tools

See how others are measuring health-related impact and find resources to help you get started.



Evidence Base

Learn more about the effects of neighborhood on health.



Measurement Stories

Read and watch stories from the field about measurement in action.



Deeper Dive

Want more? Go deeper with these ideas and innovations.

WWW.BUILDHEALTHYPLACES.ORG/MEASUREUP



Build Healthy
Places Network



RENEE ROY ELIAS, PhD

MANAGER OF STRATEGIC PROGRAMS
& RESEARCH

relias@buildhealthyplaces.org



Build Healthy Places Network

DANIEL LAU, MPH

MANAGER OF STRATEGIC ENGAGEMENT

dlau@buildhealthyplaces.org

MAIN OFFICE:

870 MARKET STREET, SUITE 1255
SAN FRANCISCO, CA 94102
415.590.3034

CURRENCY FOR COLLABORATION: NACCHO & NEHA

